

arcVision Prize  
Women and Architecture 2015  
Honorable Mention

“ *Every building endeavor must be a responsible solution in structure, services infrastructure, cost and function.*

*It must have a purpose, and above all, dare its own consequences in the environment; but...in all of the above, if there is poetry, perhaps it becomes architecture.*

*Every project is an opportunity to understand this world better. The world that is the relationship of people with other people, and of people with their environment. ”*



**SAMIRA RATHOD – India**

# SITE ART GALLERY - URBAN INSERT AS A CATALYST

## PROJECT DATA

### Location

Baroda, Gujarat, India

### Use of the Building

Public

### Construction Period

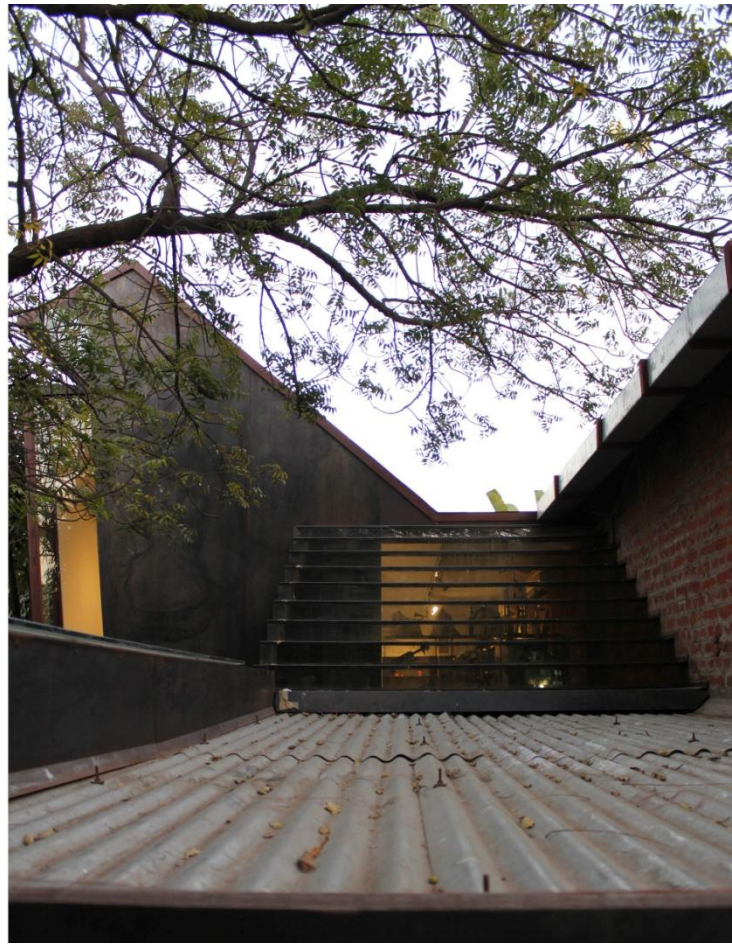
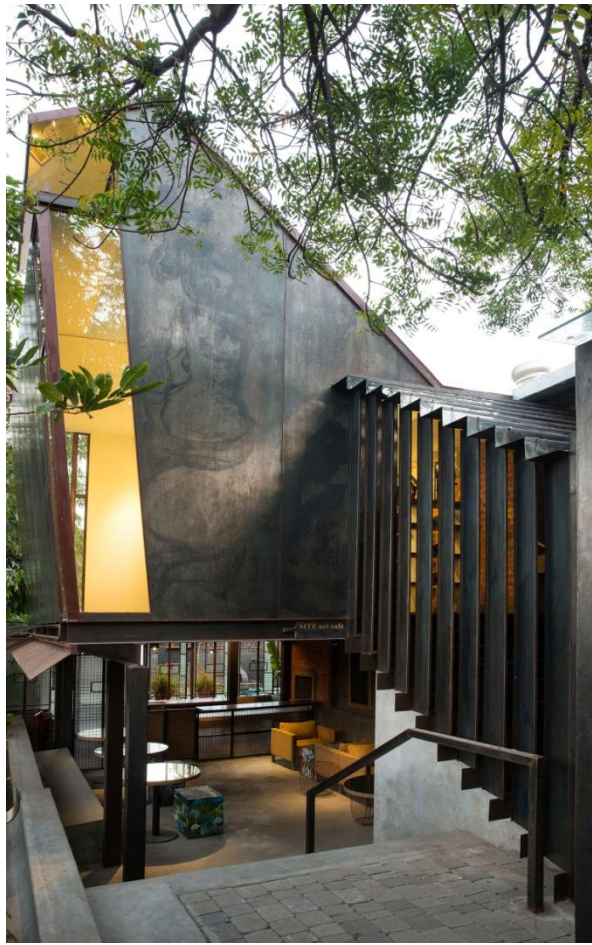
2012

An extension to a steel sculptor's warehouse workshop, the art gallery is a volume comprised of sheet steel that is meant to be a sculptural artifact in itself.

The program was to be an annex-like gallery and cafe that invites passersby into the artist's space giving them a glimpse of his work and process.

The gallery also curates and promotes local artists' work.

The steel volume is detailed with glass to allow in light along the stairwell, under which water flows down into a cafe space that is open to the public.



SAMIRA RATHOD



SAMIRA RATHOD

# NISARG FARM - STEELY FINIS

## PROJECT DATA

### Location

Ahmedabad, Gujarat, India

### Use of the Building

Residential

### Construction Period

2013

The architecture is formed of three layers; a thick concrete wall on its south west side and a transparent glass wall on its north side and between these two the walls that partition one space from the other.

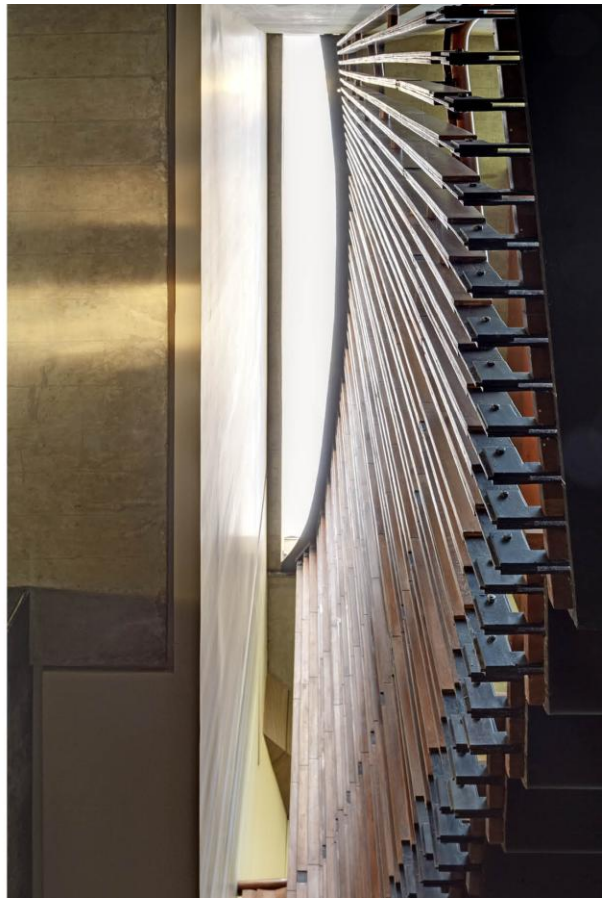
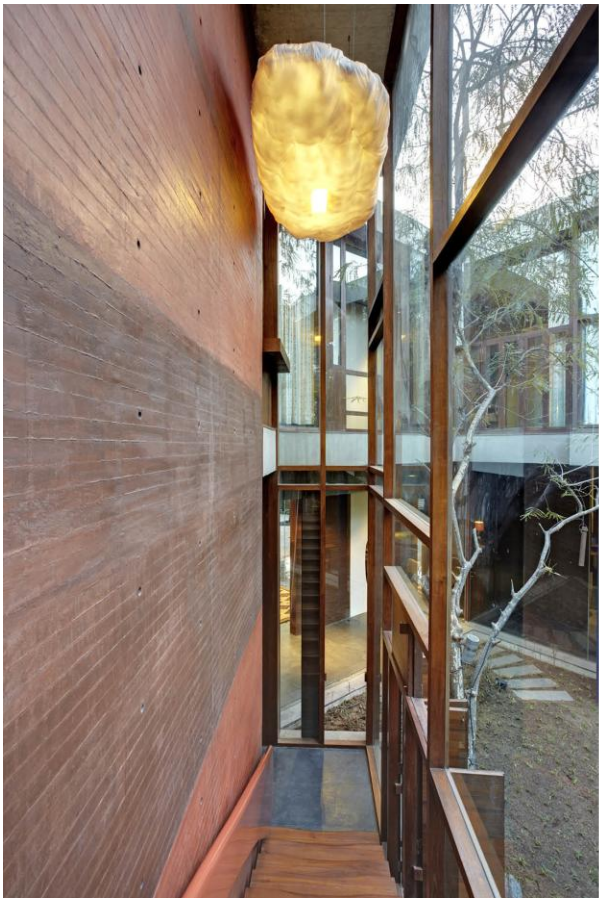
It is laden with numerous details each that add and engage its inhabitants with quirky intrigue.

Experiments in pigmented concrete, concrete and acrylic panels, a wall of metal louvres and a delicately hung staircase with skylights are perhaps some of its stark features.

Metal, glass and concrete make the primary elements of its tectonic constitution.



SAMIRA RATHOD



SAMIRA RATHOD