

Featuring Exclusive Designs from **Frank Betz Associates**

Builder

HOUSE PLANS

presented by **hanleywood**

49 Outstanding
House Plans



- Best-Selling Homes
- One and Two Story Layouts
- Brand New Designs



House Plans

The screenshot shows the BuilderHousePlans.com website. At the top, there's a navigation bar with links for 'ADVANCED SEARCH', 'BROWSE STYLES', 'BROWSE COLLECTIONS', 'PLAN OF THE WEEK', 'BUILDING COST ESTIMATOR', and 'CONSTRUCTION INFO'. A search bar is present with the placeholder text 'Search Style, Features or Plan #...'. To the right, there are 'SIGN IN' and 'REGISTER' buttons. Below the navigation bar, a large banner features a house image with the text 'COOL CONTEMPORARY' and a description: 'Think outside the box! Clean lines and airy spaces lend classic comfort to a design that's anything but traditional. Experience private retreats and indoor/outdoor living at its best. Learn More...'. On the right side of the banner, there's a search filter panel titled 'SEARCH BUILDER HOUSE PLANS' with options for bedrooms, bathrooms, garage bays, and floors. Below this, there's an 'architectural style' dropdown menu and a 'sq. ft.' range selector. A 'FIND PLANS' button is prominently displayed. Below the banner, there's a 'DESIGN TRENDS' section with six categories: 'CRAFTSMAN HOUSE PLANS', 'LUXURY HOUSE PLANS', 'NARROW LOT HOUSE PLANS', 'STARTER HOUSE PLANS', 'MAIN LEVEL MASTER PLANS', and 'SOUTHERN LIVING PLANS'. Each category has a representative house image. Below that is a 'FEATURED DESIGNERS' section with 'DONALD GARDNER ARCHITECTS' and 'FRANK BETZ ASSOCIATES'. A Creative Cloud advertisement is also visible, stating 'Students, save 60% on Creative Cloud.' with a 'Join now' link.

Visit **BuilderHousePlans.com** today to take advantage of these great benefits

- Over 28,000 plans, including thousands of designs from Hanley Wood's exclusive, award-winning design partners
- Free shipping
- Free modification quotes
- Low price guarantee
- Builder Advantage Program to help you save on multiple plan purchases

Check out the new **BuilderHousePlans.com!**

We've updated our website to offer you

- A cleaner, more accessible layout
- More robust search and filter capabilities
- Free tools to save plans and searches
- Curated collections to address builder challenges
- Bigger, better images

Builder

HOUSE PLANS

HANLEYWOOD CONSUMER MEDIA

**Senior Vice President/Strategic
Marketing Services and Consumer Media**

Jennifer Pearce

**Senior Director, Web and Ecommerce
Development** Dan Goodman

**Director, Plan Sales and Customer
Service** Michael Morgan

EDITORIAL

(CONSUMEREDITORS@HANLEYWOOD.COM)

**Content Director, Consumer E-Media
and Print Publishing** Hillary Gottemoeller

Content Manager Aurora Zeledon

Production Operations Manager
Amy Dean

Production Manager Paige Hirsch

GRAPHIC DESIGN

by VC GRAPHICS, INC.

Creative Director Veronica Vannoy

For media kits, please visit
www.hanleywood.com or contact
phernandez@hanleywood.com,
202-736-3381.

For all other inquiries, contact
hgottemoeller@hanleywood.com.

Builder House Plans is published by Hanley Wood Media, Inc. Editorial and Corporate Offices: One Thomas Circle, NW, Suite 600, Washington, D.C. 20005. All floor plans and elevations copyright by Frank Betz Associates, Inc. and may not be reproduced by any means without permission. All text and illustrative material as a whole copyright © 2015 by Hanley Wood Media, Inc. All rights reserved. Printed in the United States of America.

CONTENTS



- 2. Cover Home**
- 4. Featured Home**
- 6. Latest Plans**
- 10. Two-Story Homes**
- 27. One-Story Homes**
- 32. Ordering Information**

On the cover: Turn the page to learn more about this beautiful cottage.
Photo by Carolyn Raney, Simply Irresistible Photography.

Order online at builderhouseplans.com or call 1.800.634.4773

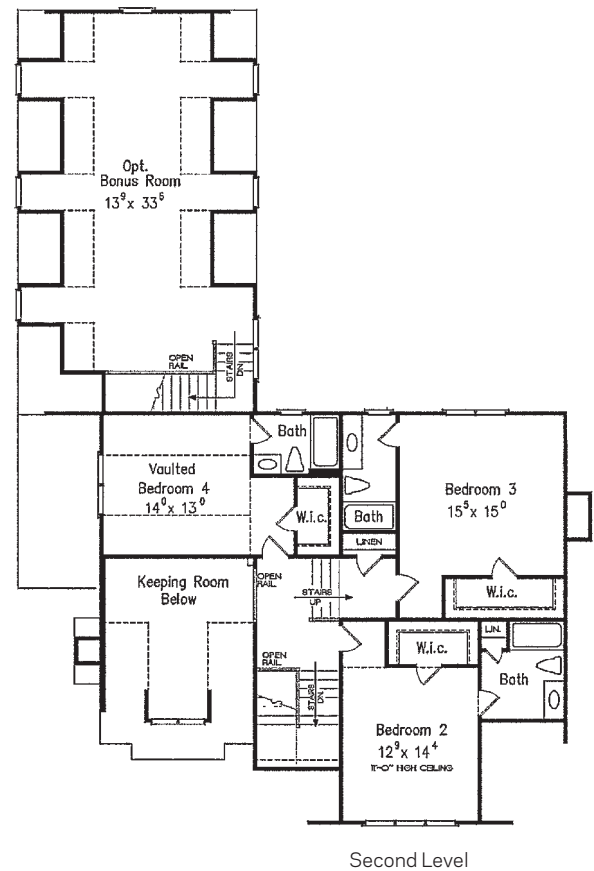
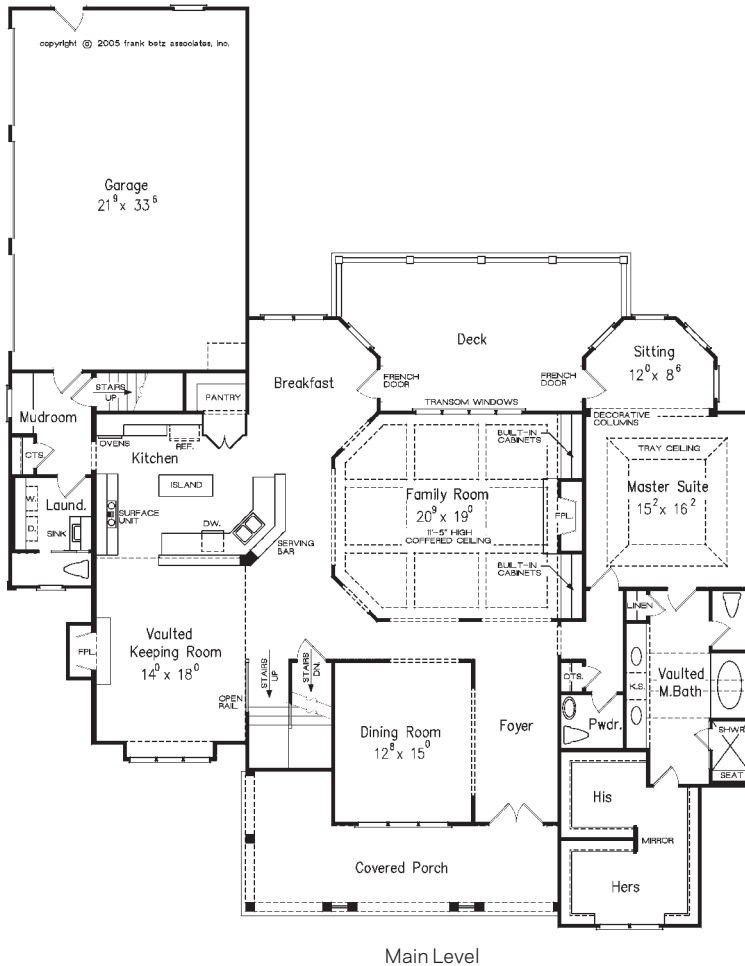
Feature Homes



PLAN CODE: BHP0100001

Type: Craftsman	5-SET \$1,270
Square Footage: 3,878	8-SET \$1,385
Bonus Space: 649 sq. ft.	REPRO \$1,650
Bedrooms: 4	CAD \$2,825
Bathrooms: 4 ½ + ½	PDF \$1,650
Dimensions: 69' 0" W x 85' 6" D	
Foundation: Crawlspace, Slab, Unfinished Walkout Basement	

Order online at builderhouseplans.com or call 1.800.634.4773



UNIQUE BEAUTY

Spacious luxury living is the hallmark of this Craftsman home. The exterior is immediately appealing, but the real treat awaits you inside. A coffered ceiling in the family room adds an elegant touch. The bayed breakfast nook overlooks the rear deck, beckoning for outdoor meals. The master suite extends the entire length of the plan and features a private sitting room complete with deck access. The second floor

houses three additional bedrooms, each with a full bath. An optional bonus room above the garage encourages future expansion. Storage space abounds: don't miss the master suite's huge walk-in closet, the kitchen's generous pantry, and the well-organized mud room. Accessed from the side, the three-car garage offers plenty of parking without obscuring the gorgeous exterior.

PHOTOS BY CAROLYNE RANEY, SIMPLY IRRESISTIBLE PHOTOGRAPHY. BUILDER: HATCLIFF BUILDERS.

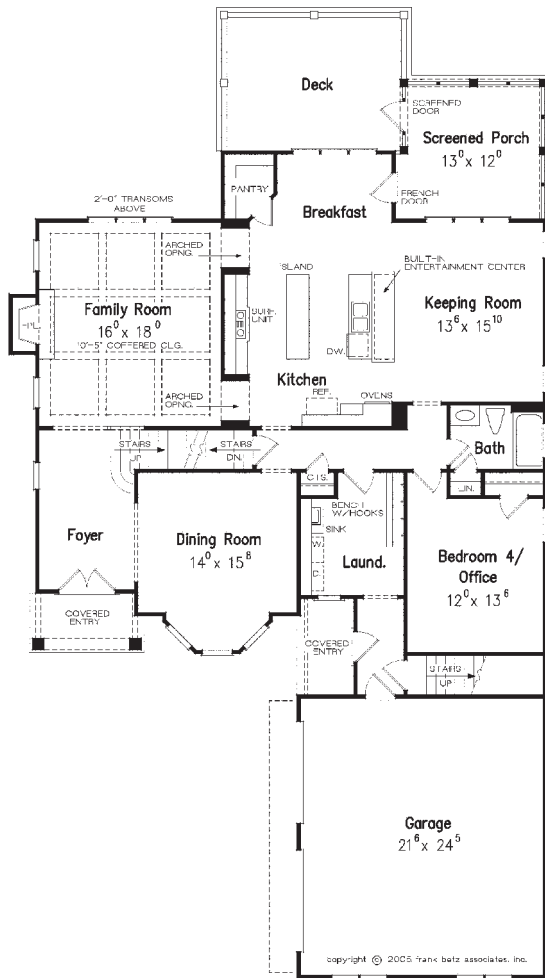
Feature Homes



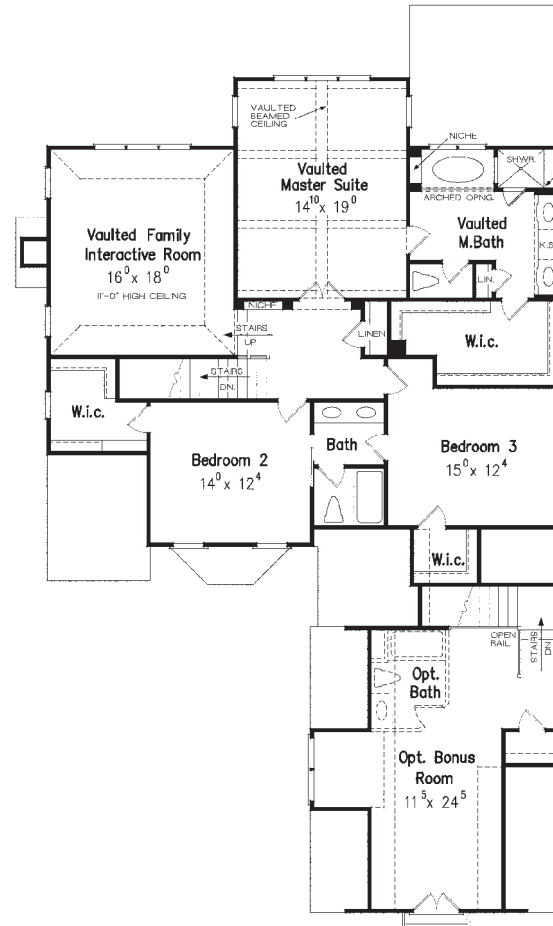
PLAN CODE: BHP0100002

Type: Cottage	5-SET \$1,070
Square Footage: 3,295	8-SET \$1,150
Bonus Space: 443 sq. ft.	REPRO \$1,385
Bedrooms: 4	CAD \$2,400
Bathrooms: 3	PDF \$1,385
Dimensions: 47' 4" W x 79' 4" D	
Foundation: Crawlspace, Slab, Unfinished Walkout Basement	

Order online at builderhouseplans.com or call 1.800.634.4773



Main Level



Second Level

FULL OF SPECIAL DETAILS

This home's striking facade is punctuated by a decorative entryway announcing the front door. Inside, your family will love kicking back in the keeping room near the island kitchen. Details in the family room include arched openings, a fireplace, and an elegant ceiling treatment. A rear deck and screened porch invite outdoor enjoyment. The vaulted master suite resides on the second floor along with two

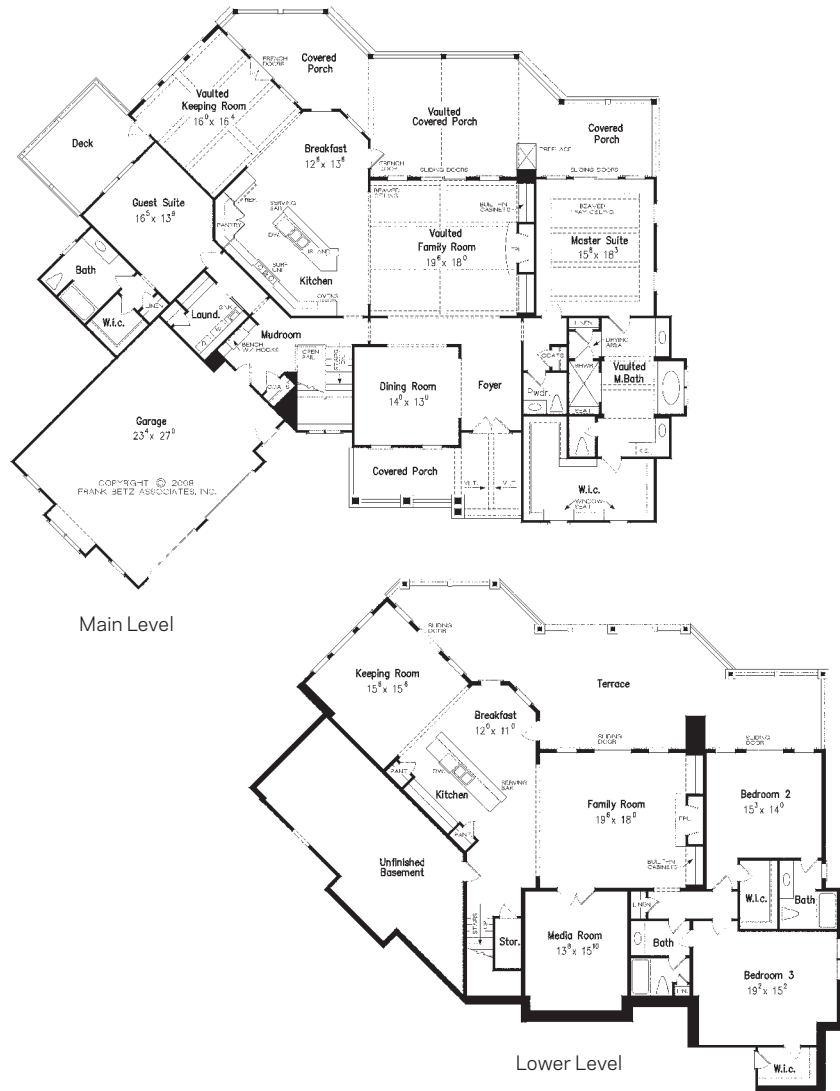
generous bedrooms and a spacious "family interactive room." A bonus room gives you the opportunity to expand later. Don't miss the well-outfitted laundry room or the dining room's gorgeous bay window.

EXTERIOR PHOTOS BY DAVID ROBERTS. INTERIOR PHOTOS BY BETH FELLHOELTER PHOTOGRAPHY. BUILDER: LUXE HOMES.



SLOPED-LOT LUXURY

This gorgeous home boasts a complete open-concept living space on each floor, each with its own family room, spacious kitchen island (the kitchenette downstairs will be perfect for guests to make their own coffee and snacks), breakfast nook, and keeping room. The first level boasts the luxurious master suite, complete with tons of closet space and a large shower with a drying area. Outdoor living space reigns supreme, with a very wide porch on the top level and an equally spacious terrace below.



PLAN CODE: BHP0100003

Type: Cottage
 Square Footage: 5,236
 Bedrooms: 4
 Bathrooms: 4 1/2
 Dimensions: 89' 11" W x 75' 2" D
 Foundation: Finished Walkout Basement

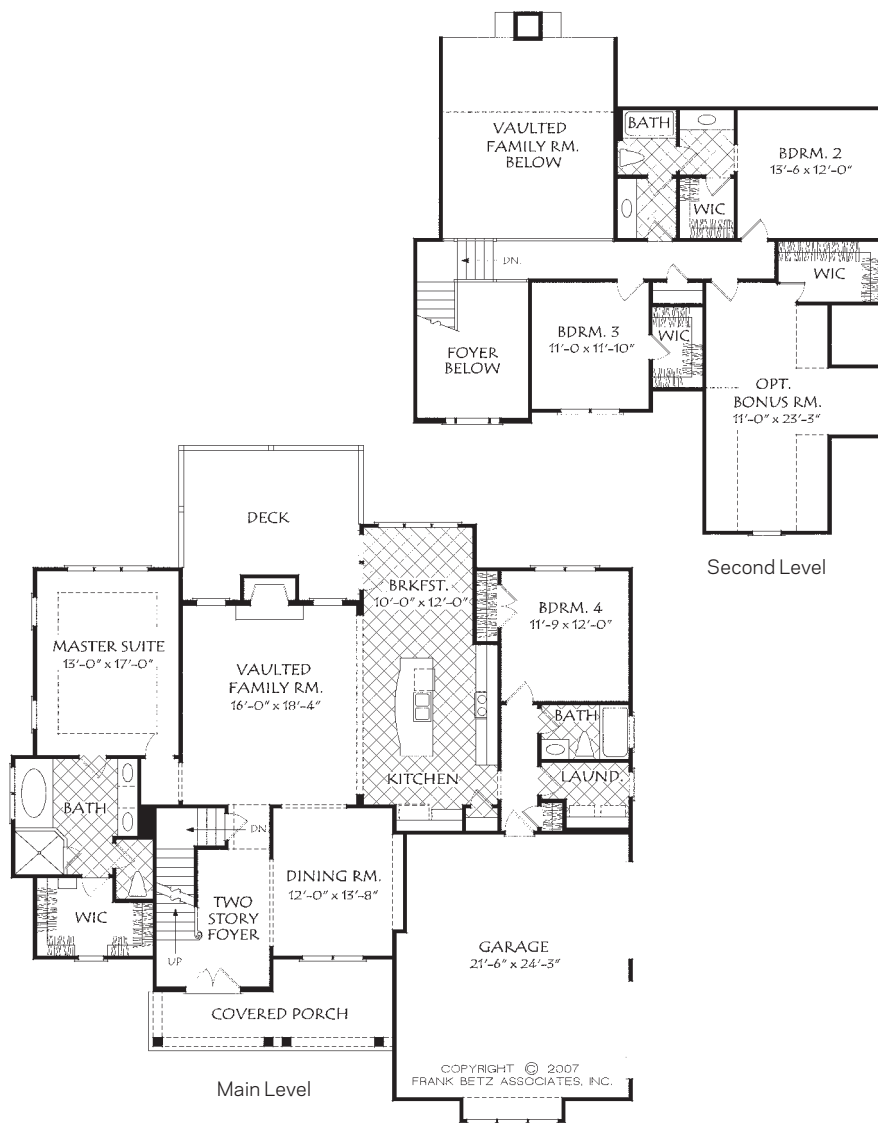
5-SET \$1,270
 8-SET \$1,385
 REPRO \$1,650
 CAD \$2,825
 PDF \$1,650

Order online at builderhouseplans.com or call 1.800.634.4773



COTTAGE FOR TODAY

Stone and shingle combine with charming clipped gables and interesting windows to provide a delightful English cottage feel for this plan. The interior hosts a great open layout that puts the vaulted family room, the island kitchen, and the casual breakfast nook at the center of activity. The split-bedroom layout places the guest suite at one end of the home and the deluxe master suite at the other. Upstairs, two more bedrooms (each with a walk-in closet) share a full hall bath and access to the versatile bonus room.



PLAN CODE: BHP0100004

Type: English Cottage
Square Footage: 2,403
Bonus: 362 sq. ft.
Bedrooms: 4
Bathrooms: 3
Dimensions: 57' 0" W x 55' 0" D
Foundation: Crawlpace, Slab, Unfinished Walkout Basement

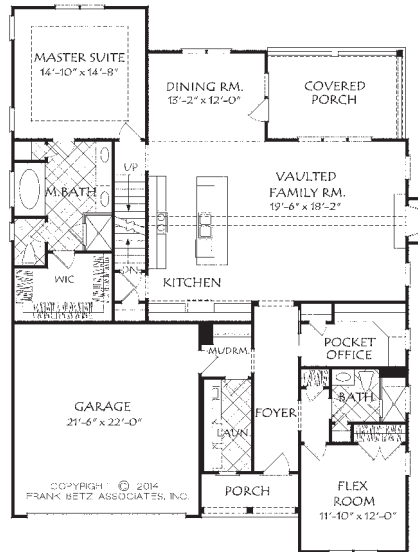
5-SET \$995
 8-SET \$1,075
 REPRO \$1,275
 CAD \$2,205
 PDF \$1,275

Order online at builderhouseplans.com or call 1.800.634.4773

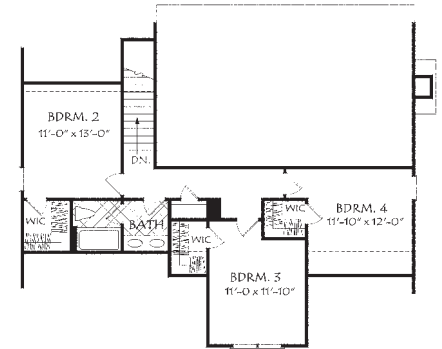


PLAN CODE: BHP0100005

Type: Cottage	5-SET \$960
Square Footage: 2,565	8-SET \$1,000
Bedrooms: 4	REPRO \$1,180
Bathrooms: 3	CAD \$2,040
Dimensions: 45' 0" W x 62' 0" D	PDF \$1,180
Foundation: Slab, Unfinished Walkout Basement	



Main Level



Second Level

Order online at builderhouseplans.com or call 1.800.634.4773

HANDY POCKET OFFICE

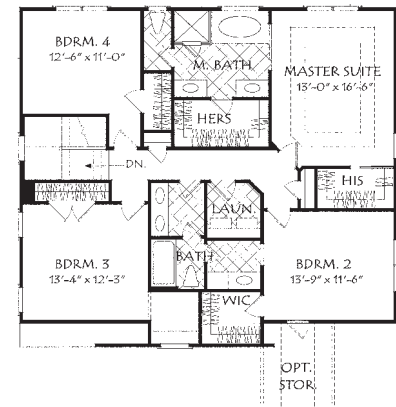


PLAN CODE: BHP0100006

Type: Traditional	5-SET \$995
Square Footage: 2,543	8-SET \$1,075
Bedrooms: 4	REPRO \$1,275
Bathrooms: 3	CAD \$2,205
Dimensions: 42' 0" W x 54' 6" D	PDF \$1,275
Foundation: Crawlspace, Unfinished Walkout Basement	



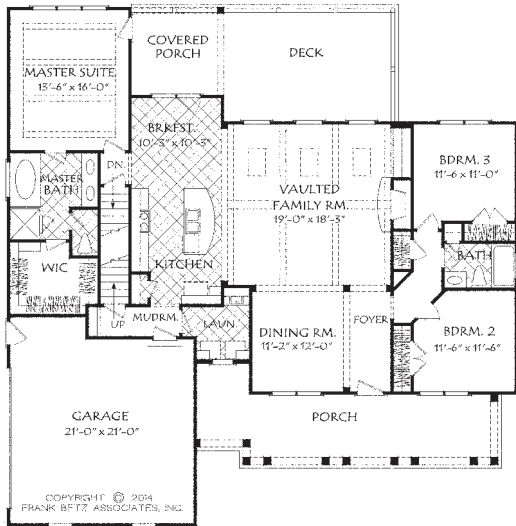
Main Level



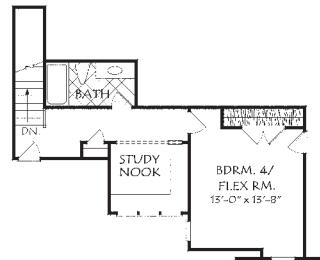
Second Level

Order online at builderhouseplans.com or call 1.800.634.4773

GREAT TECH AREA



Main Level



Second Level



PLAN CODE: BHP010007

Type: Cottage

Square Footage: 2,295

Bedrooms: 4

Bathrooms: 3

Dimensions:
58' 0" W x 59' 0" D

Foundation:
Crawlspace, Unfinished
Walkout Basement

5-SET \$960

8-SET \$1,000

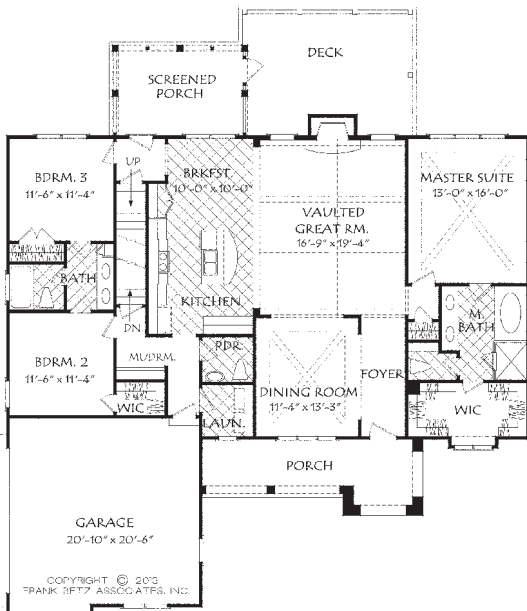
REPRO \$1,180

CAD \$2,040

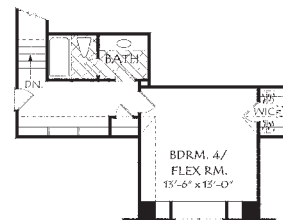
PDF \$1,180

Order online at builderhouseplans.com
or call 1.800.634.4773

UNUSUAL CURB APPEAL



Main Level



Second Level



PLAN CODE: BHP010008

Type: Cottage

Square Footage: 2,281

Bedrooms: 4

Bathrooms: 3 1/2

Dimensions:
57' 6" W x 63' 0" D

Foundation:
Crawlspace, Unfinished
Walkout Basement

5-SET \$960

8-SET \$1,000

REPRO \$1,180

CAD \$2,040

PDF \$1,180

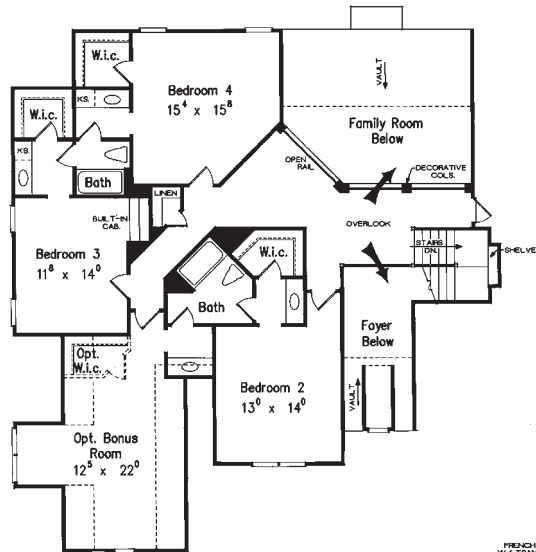
Order online at builderhouseplans.com
or call 1.800.634.4773

FLEX SUITE UPSTAIRS

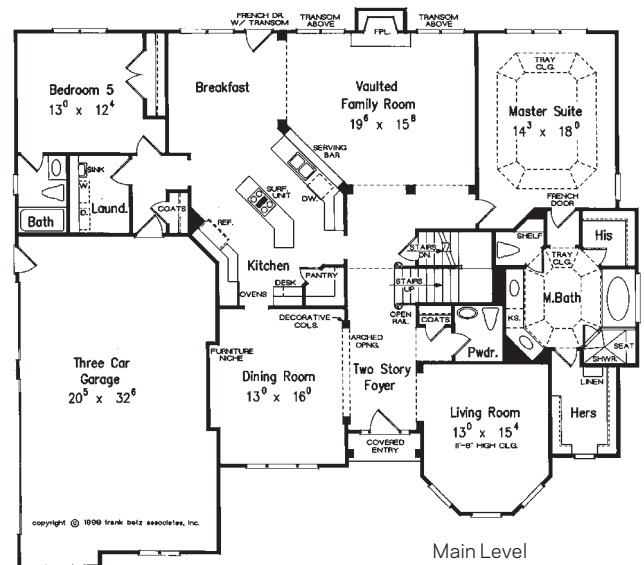


STRIKING TURRET

Lovely arches and a turret-style bay create a beautiful, timeless style. The living room lies inside the turret to the right of the foyer, while the dining room is on the left. Straight ahead, the vaulted two-story family room is warmed by an enchanting fireplace. The breakfast area adjoins the island kitchen and accesses the backyard through a French door. The master suite's French door leads to a private bath that features dual walk-in closets and an over-size tub.



Second Level



Main Level

PLAN CODE: BHP0100009

Type: French Country

Square Footage: 3,618

Bonus Space: 344 sq. ft.

Bedrooms: 5

Bathrooms: 4 1/2

Dimensions: 64' 6" W x 57' 10" D

Foundation: Crawlspace, Slab, Unfinished Walkout Basement

5-SET \$1,270

8-SET \$1,385

REPRO \$1,650

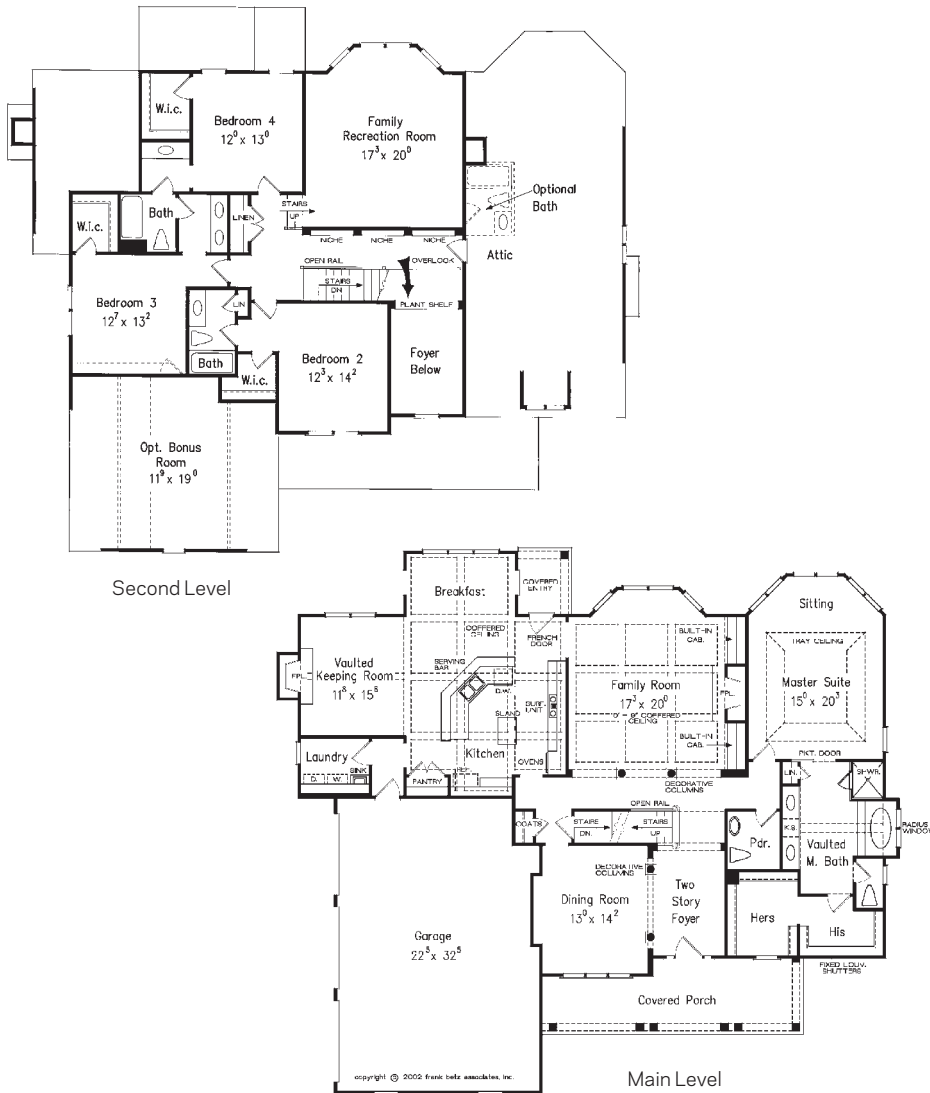
CAD \$2,825

PDF \$1,650



BALANCED LAYOUT

Here's a layout with a great balance of formal and casual spaces. The fireplace gives a definite focus in the grand family room; a bay window also will draw attention. The expansive kitchen makes it easy for multiple cooks to share space. A vaulted keeping room at the rear is a cozy hideaway. The master suite shines with a bayed sitting area and majestic vaulted bath with a garden tub.



PLAN CODE: BHP0100010

Type: Country
 Square Footage: 3,585
 Bonus Space: 234 sq. ft.
 Bedrooms: 4
 Bathrooms: 3 1/2
 Dimensions: 68' 10" W x 60' 0" D
 Foundation: Crawlpace, Unfinished Walkout Basement

5-SET \$1,270
 8-SET \$1,385
 REPRO \$1,650
 CAD \$2,825
 PDF \$1,650

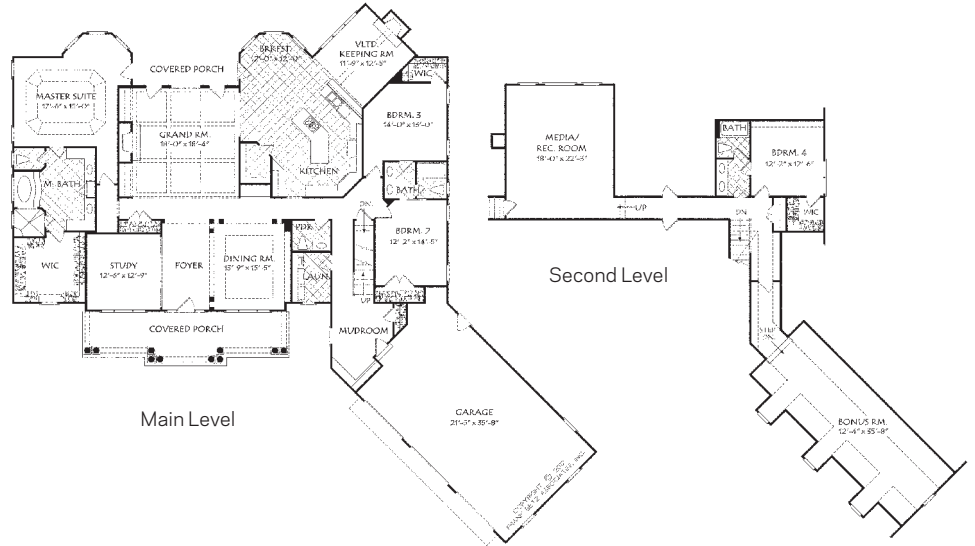
Order online at builderhouseplans.com or call 1.800.634.4773

PHOTO BY BRYAN WILLY PHOTOGRAPHY



PLAN CODE: BHP0100012

Type: Traditional	5-SET \$1,270
Square Footage: 4,797	8-SET \$1,385
Bedrooms: 4	REPRO \$1,650
Bathrooms: 3 1/2	CAD \$2,825
Dimensions: 99' 3" W x 91' 8" D	PDF \$1,650
Foundation: Crawlspace, Slab, Unfinished Walkout Basement	



Order online at builderhouseplans.com or call 1.800.634.4773

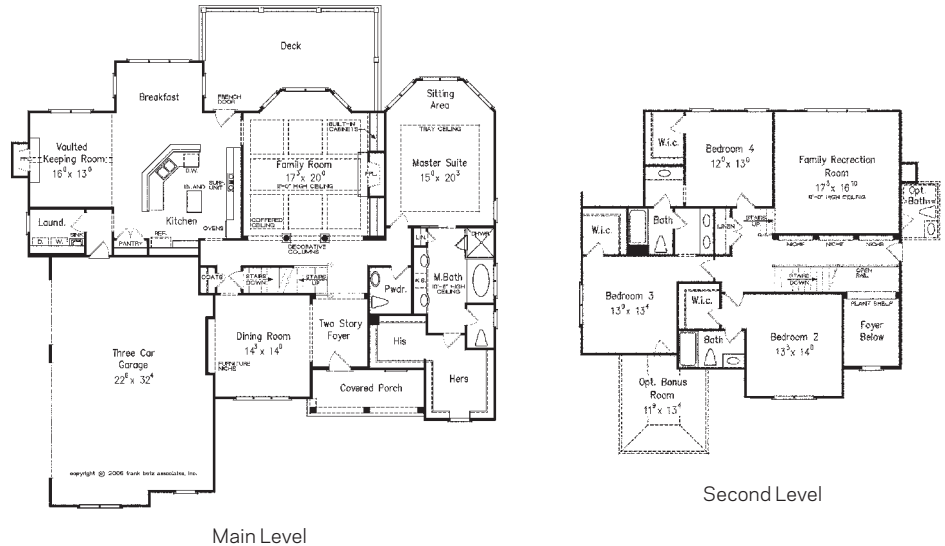
PHOTO BY MARK EDWARDS

UPSCALE DETAILS



PLAN CODE: BHP0100013

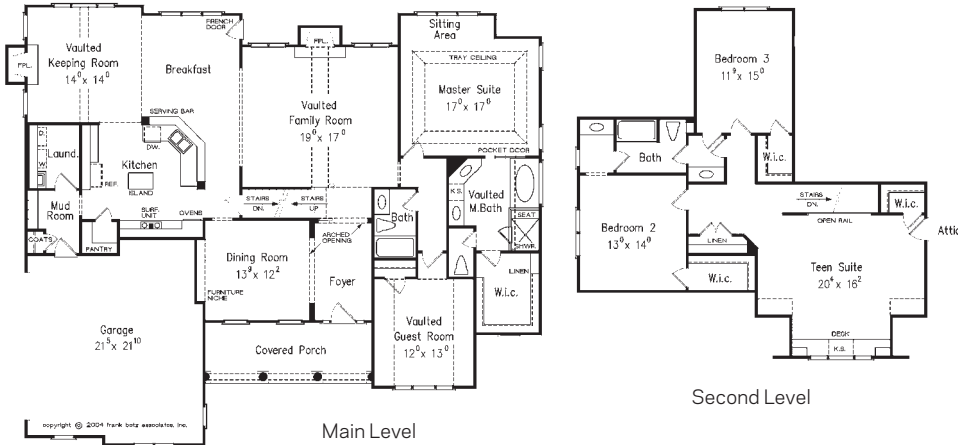
Type: French Country	5-SET \$1,270
Square Footage: 3,615	8-SET \$1,385
Bonus Space: 160 sq. ft.	REPRO \$1,650
Bedrooms: 4	CAD \$2,825
Bathrooms: 3 1/2	PDF \$1,650
Dimensions: 67' 4" W x 62' 0" D	
Foundation: Crawlspace, Slab, Unfinished Walkout Basement	



Order online at builderhouseplans.com or call 1.800.634.4773

DELUXE MASTER ON MAIN

Two-Story Homes



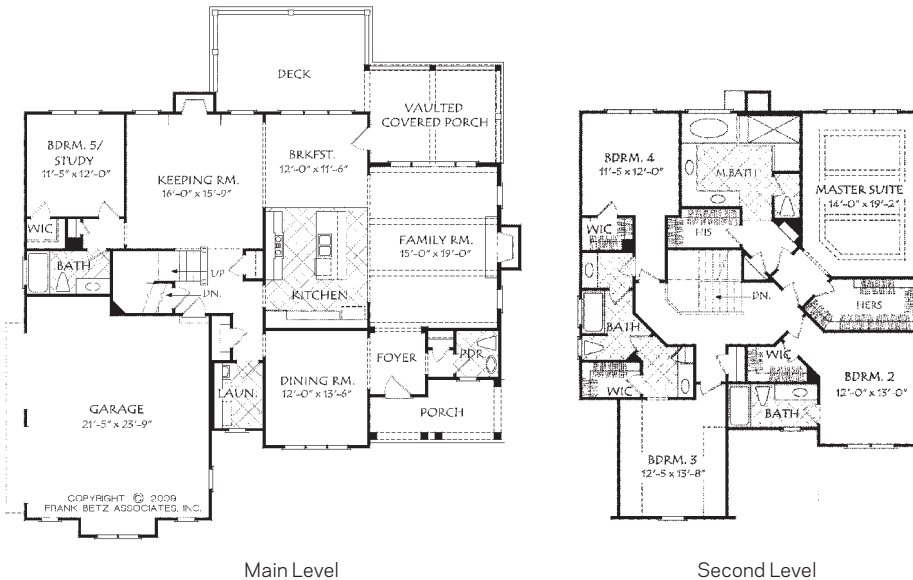
PLAN CODE: BHP0100014

Type: French Country	5-SET \$1,160
Square Footage: 3,254	8-SET \$1,235
Bedrooms: 4	REPRO \$1,485
Bathrooms: 3	CAD \$2,565
Dimensions: 65' 4" W x 53' 8" D	PDF \$1,485
Foundation: Crawl-space, Slab, Unfinished Walkout Basement	

Order online at builderhouseplans.com or call 1.800.634.4773

PHOTO BY BRYAN WILLY PHOTOGRAPHY

LOTS OF STORAGE



PLAN CODE: BHP0100015

Type: French Country	5-SET \$1,070
Square Footage: 3,243	8-SET \$1,150
Bedrooms: 5	REPRO \$1,385
Bathrooms: 4 1/2	CAD \$2,400
Dimensions: 58' 4" W x 55' 6" D	PDF \$1,385
Foundation: Crawl-space, Unfinished Walkout Basement	

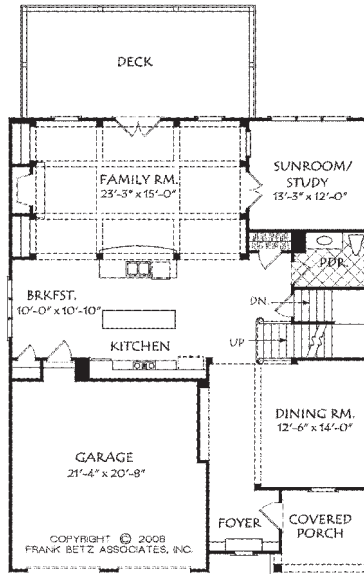
Order online at builderhouseplans.com or call 1.800.634.4773

LARGE MASTER SHOWER

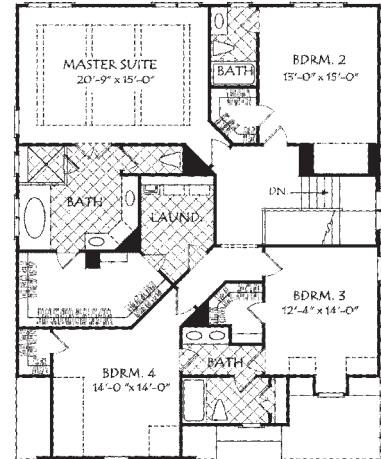


PLAN CODE: BHP0100041

Type: Country	5-SET \$1,070
Square Footage: 3,200	8-SET \$1,150
Bedrooms: 4	REPRO \$1,385
Bathrooms: 3 1/2	CAD \$2,400
Dimensions: 40'0"W x 50'0"D	PDF \$1,385
Foundation: CrawlSpace, Unfinished Walkout Basement	



Main Level



Second Level

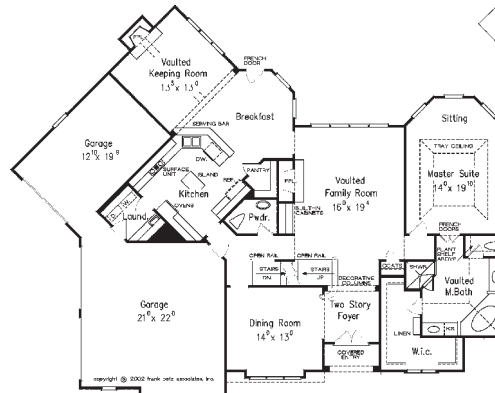
Order online at builderhouseplans.com or call 1.800.634.4773

STANDOUT KITCHEN

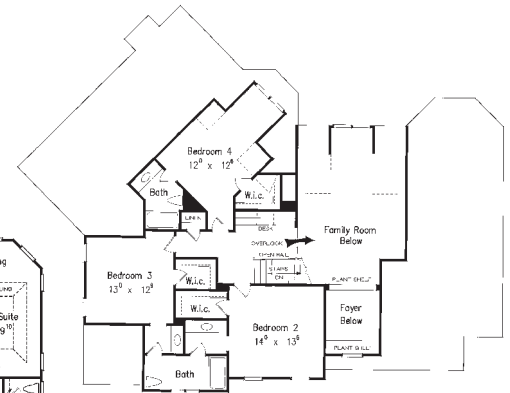


PLAN CODE: BHP0100016

Type: French Country	5-SET \$1,160
Square Footage: 3,012	8-SET \$1,235
Bedrooms: 4	REPRO \$1,485
Bathrooms: 3 1/2	CAD \$2,565
Dimensions: 72'0"W x 57'0"D	PDF \$1,485
Foundation: CrawlSpace, Unfinished Walkout Basement	



Main Level

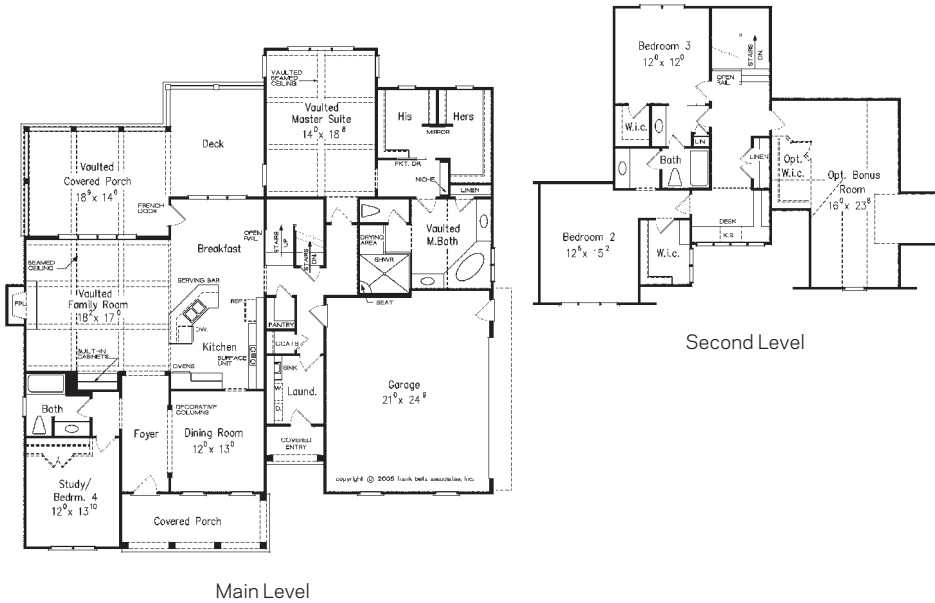


Second Level

Order online at builderhouseplans.com or call 1.800.634.4773

GREAT FLOW THROUGHOUT

Two-Story Homes



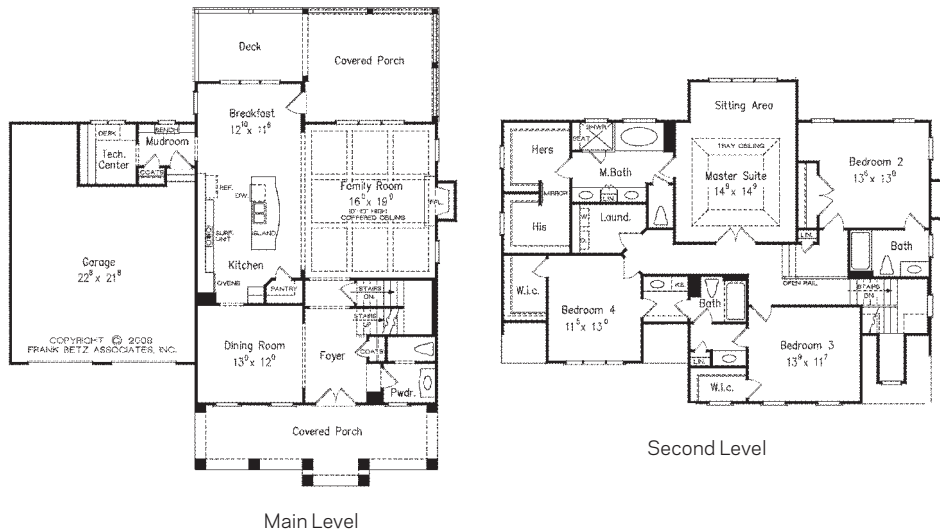
PLAN CODE: BHP010017

Type: Cottage	5-SET \$1,070
Square Footage: 2,899	8-SET \$1,150
Bonus Space: 385 sq. ft.	REPRO \$1,385
Bedrooms: 4	CAD \$2,400
Bathrooms: 3	PDF \$1,385
Dimensions: 62' 4" W x 64' 0" D	
Foundation: Crawlspce, Slab, Unfinished Walkout Basement	

Order online at builderhouseplans.com or call 1.800.634.4773

PHOTO BY MYERS SMITH

OUTSTANDING OUDOORS



PLAN CODE: BHP010011

Type: Cottage	5-SET \$995
Square Footage: 2,845	8-SET \$1,075
Bedrooms: 4	REPRO \$1,275
Bathrooms: 3 1/2	CAD \$2,205
Dimensions: 55' 4" W x 59' 0" D	PDF \$1,275
Foundation: Crawlspce, Unfinished Walkout Basement	

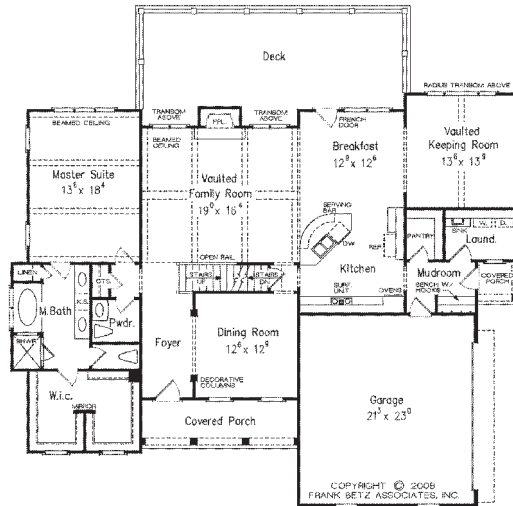
Order online at builderhouseplans.com or call 1.800.634.4773

TECH CENTER + MUD ROOM

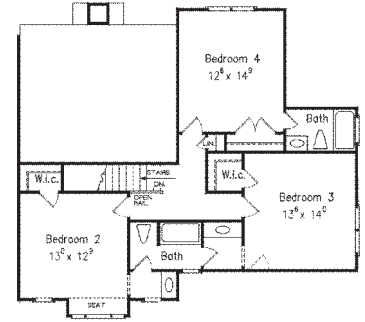


PLAN CODE: BHP0100018

Type: Cottage	5-SET \$995
Square Footage: 2,828	8-SET \$1,075
Bedrooms: 4	REPRO \$1,275
Bathrooms: 3 1/2	CAD \$2,205
Dimensions: 62' 0" W x 50' 6" D	PDF \$1,275
Foundation: CrawlSpace, Unfinished Walkout Basement	



Main Level



Second Level

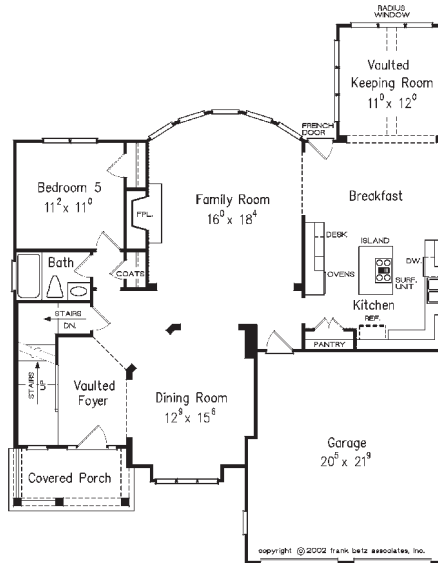
Order online at builderhouseplans.com or call 1.800.634.4773

COOL CURVED ISLAND

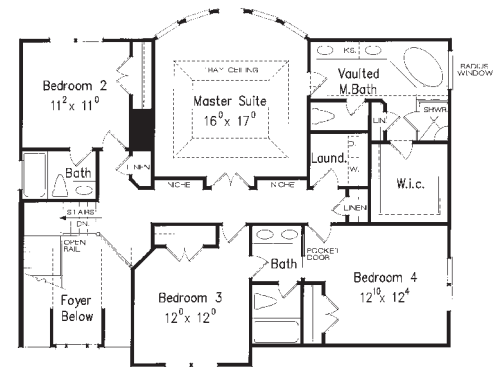


PLAN CODE: BHP0100019

Type: French Country	5-SET \$1,070
Square Footage: 2,794	8-SET \$1,150
Bedrooms: 5	REPRO \$1,385
Bathrooms: 4	CAD \$2,400
Dimensions: 45' 0" W x 56' 0" D	PDF \$1,385
Foundation: CrawlSpace, Slab, Unfinished Walkout Basement	



Main Level



Second Level

Order online at builderhouseplans.com or call 1.800.634.4773

PHOTO BY BRYAN WILLY PHOTOGRAPHY

BEAUTIFUL BOW WINDOWS

Two-Story Homes

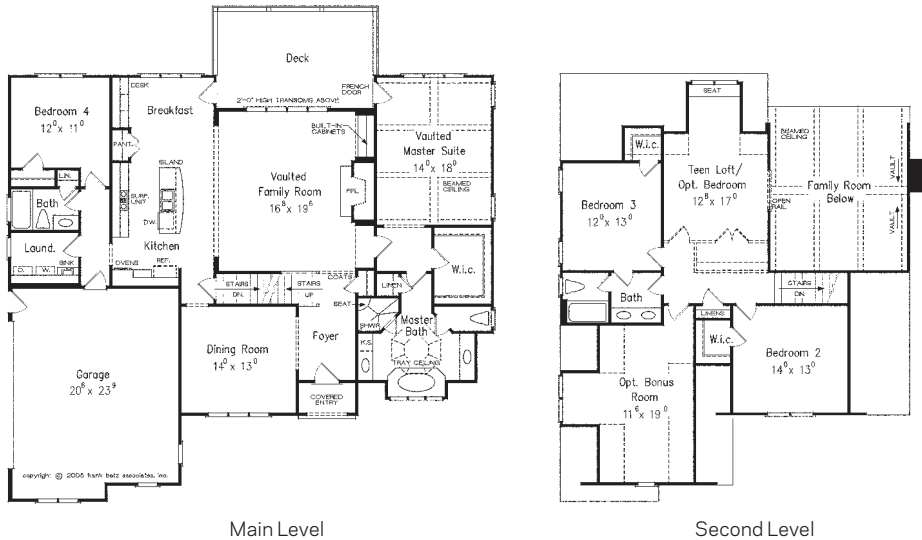


PLAN CODE: BHP010020

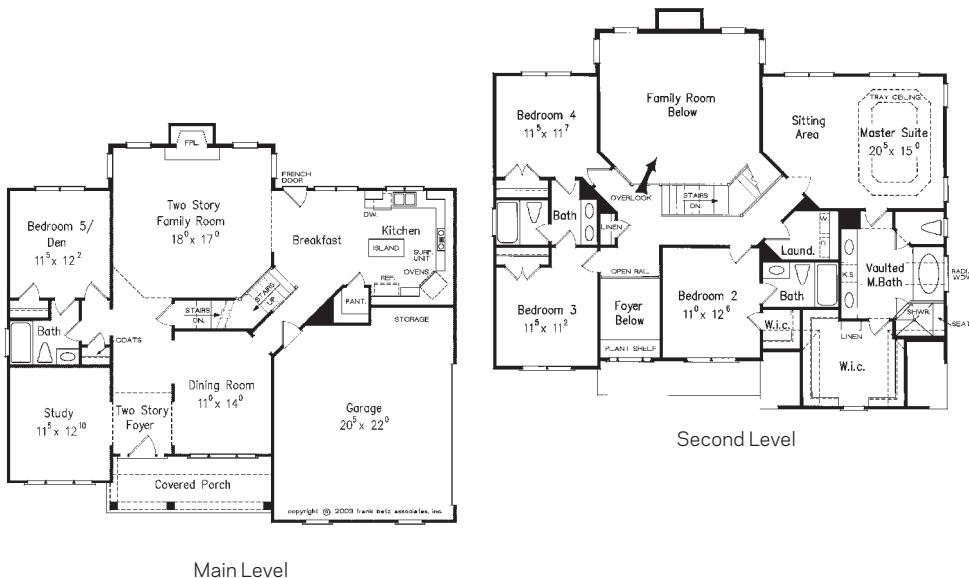
Type: French Country	5-SET \$1,070
Square Footage: 2,776	8-SET \$1,150
Bonus Space: 271 sq. ft.	REPRO \$1,385
Bedrooms: 4	CAD \$2,400
Bathrooms: 3	PDF \$1,385
Dimensions: 59' 0" W x 52' 0" D	
Foundation: CrawlSpace, Slab, Unfinished Walkout Basement	

Order online at builderhouseplans.com or call 1.800.634.4773

PHOTO BY SEAN MCGLINCY PHOTOGRAPHY



SPECIAL MASTER BATH



PLAN CODE: BHP010021

Type: Colonial	5-SET \$1,070
Square Footage: 2,762	8-SET \$1,150
Bedrooms: 5	REPRO \$1,385
Bathrooms: 4	CAD \$2,400
Dimensions: 51' 0" W x 45' 4" D	PDF \$1,385
Foundation: CrawlSpace, Slab, Unfinished Walkout Basement	

Order online at builderhouseplans.com or call 1.800.634.4773

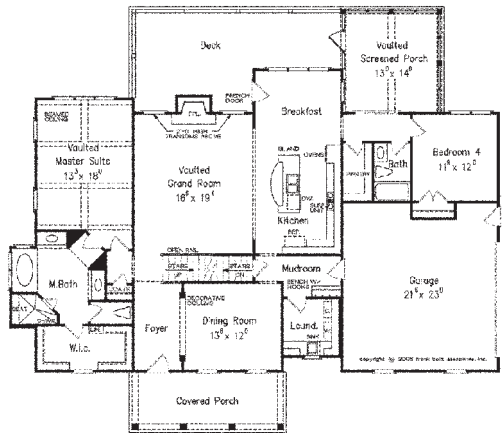
CLASSIC APPEAL



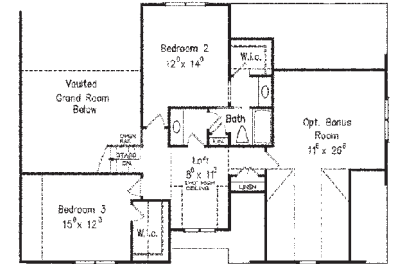
PLAN CODE: BHP010022

Type: Country	5-SET \$1,070
Square Footage: 2,701	8-SET \$1,150
Bonus Space: 378 sq. ft.	REPRO \$1,385
Bedrooms: 4	CAD \$2,400
Bathrooms: 3	PDF \$1,385
Dimensions: 68' 0" W x 58' 4" D	
Foundation: Crawlspace, Unfinished Walkout Basement	

Order online at builderhouseplans.com
or call 1.800.634.4773



Main Level



Second Level

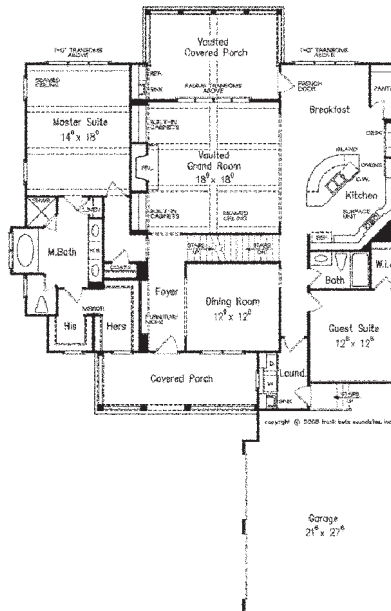
SCREENED PORCH + DECK



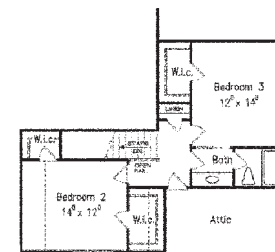
PLAN CODE: BHP010023

Type: Country	5-SET \$1,070
Square Footage: 2,690	8-SET \$1,150
Bedrooms: 4	REPRO \$1,385
Bathrooms: 3	CAD \$2,400
Dimensions: 54' 0" W x 83' 4" D	PDF \$1,385
Foundation: Crawlspace, Slab, Unfinished Walkout Basement	

Order online at builderhouseplans.com
or call 1.800.634.4773



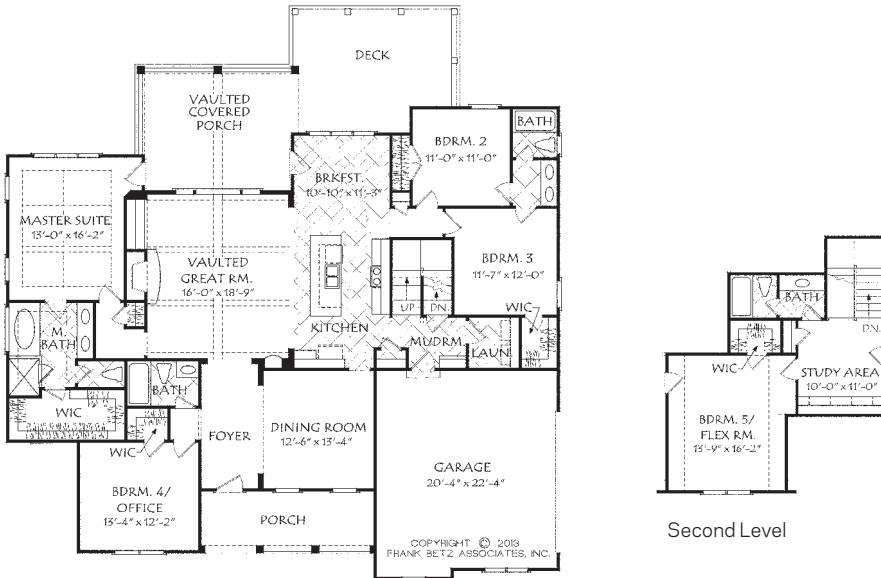
Main Level



Second Level

FOCUS ON THE KITCHEN

Two-Story Homes



Main Level

Second Level

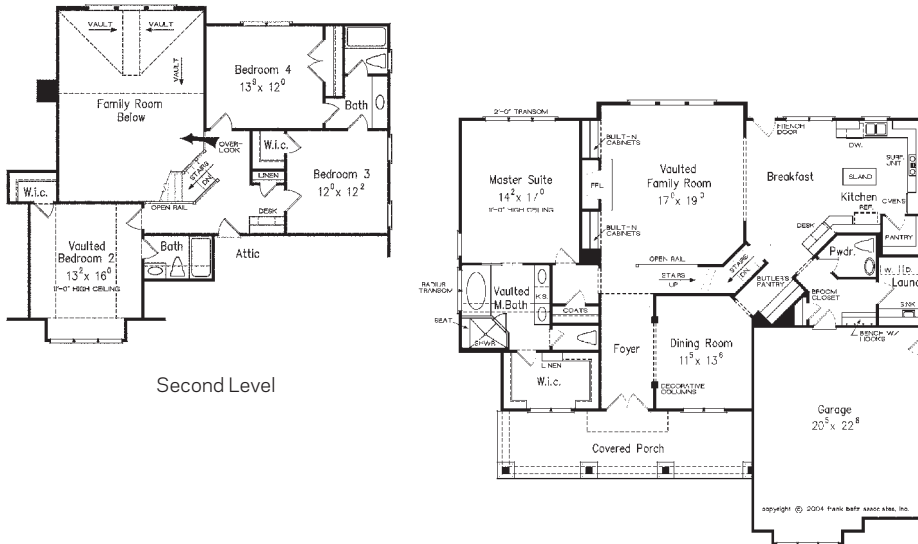


PLAN CODE: BHP010024

Type: Cottage	5-SET \$995
Square Footage: 2,677	8-SET \$1,075
Bedrooms: 5	REPRO \$1,275
Bathrooms: 4	CAD \$2,205
Dimensions: 62' 6" W x 58' 6" D	PDF \$1,275
Foundation: Crawlpace, Unfinished Daylight Basement	

Order online at builderhouseplans.com or call 1.800.634.4773

MODERN SENSIBILITY



Second Level

Main Level



PLAN CODE: BHP010025

Type: Craftsman	5-SET \$1,070
Square Footage: 2,619	8-SET \$1,150
Bedrooms: 4	REPRO \$1,385
Bathrooms: 3 1/2	CAD \$2,400
Dimensions: 56'0" W x 53'0" D	PDF \$1,385
Foundation: Crawlpace, Slab, Unfinished Walkout Basement	

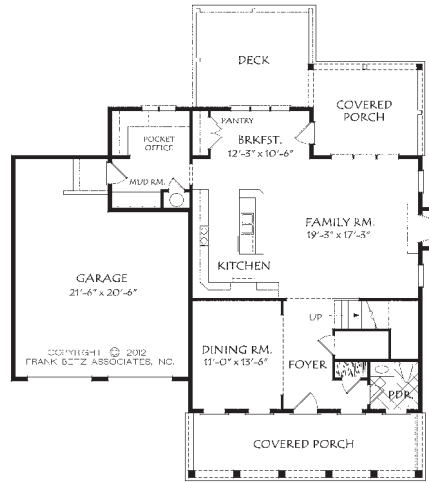
Order online at builderhouseplans.com or call 1.800.634.4773

GRACEFUL FRONT PORCH

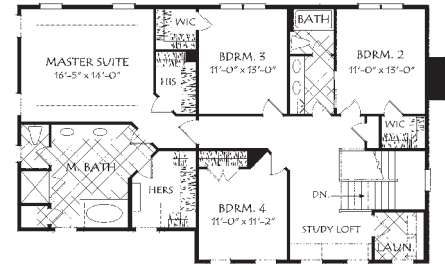


PLAN CODE: BHP010026

Type: Colonial	5-SET \$995
Square Footage: 2,616	8-SET \$1,075
Bedrooms: 4	REPRO \$1,275
Bathrooms: 2 1/2	CAD \$2,205
Dimensions: 53' 0" W x 46' 0" D	PDF \$1,275
Foundation: Crawlspace, Slab	



Main Level



Second Level

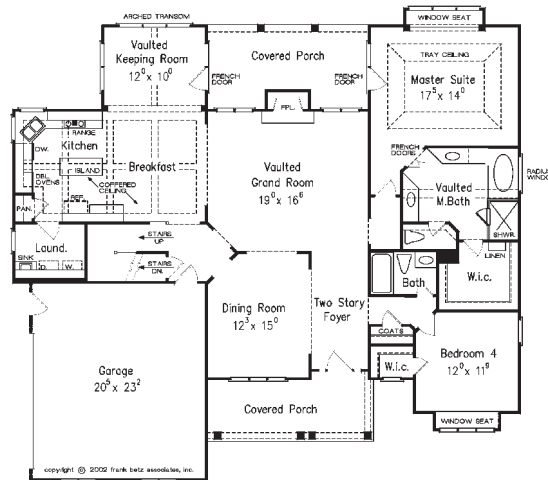
Order online at builderhouseplans.com
or call 1.800.634.4773

PRACTICAL DETAILS

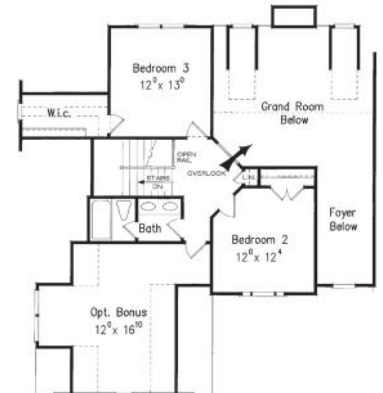


PLAN CODE: BHP010027

Type: New American	5-SET \$1,070
Square Footage: 2,587	8-SET \$1,150
Bonus Space: 278 sq. ft.	REPRO \$1,385
Bedrooms: 4	CAD \$2,400
Bathrooms: 3	PDF \$1,385
Dimensions: 60' 0" W x 56' 0" D	
Foundation: Crawlspace, Slab, Unfinished Walkout Basement	



Main Level

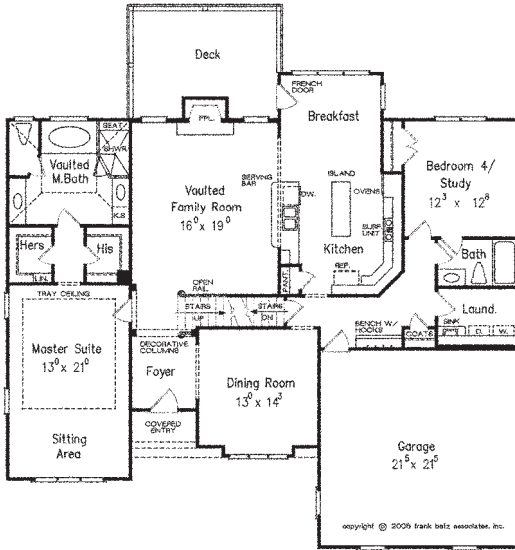


Second Level

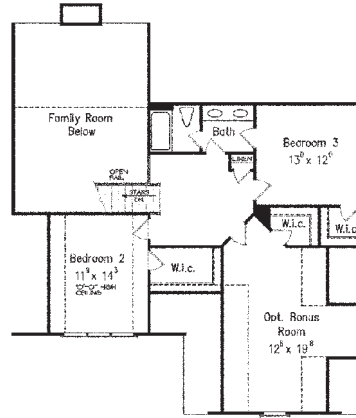
Order online at builderhouseplans.com
or call 1.800.634.4773

SIDE-LOADING GARAGE

Two-Story Homes



Main Level



Second Level



PLAN CODE: BHP010028

Type: French Country **5-SET \$1,070**

Square Footage: 2,508 **8-SET \$1,150**

Bonus Space: 333 sq. ft. **REPRO \$1,385**

Bedrooms: 4 **CAD \$2,400**

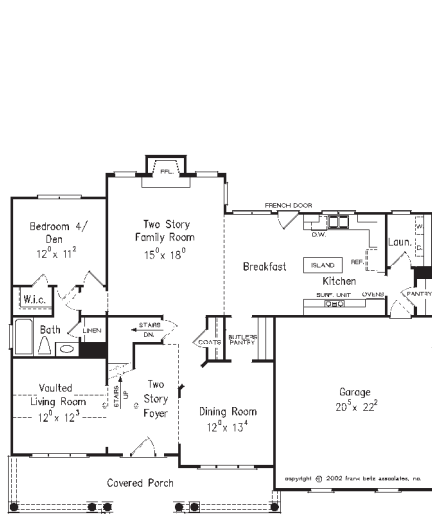
Bathrooms: 3 **PDF \$1,385**

Dimensions:
56' 0" W x 52' 0" D

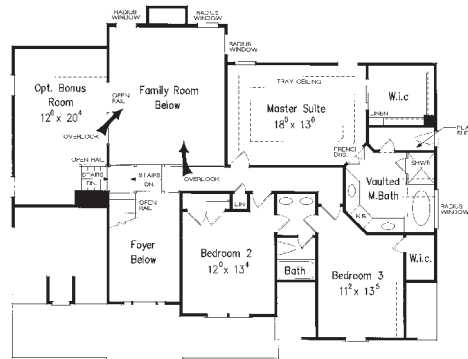
Foundation:
Crawlspace, Unfinished Walkout Basement

Order online at builderhouseplans.com or call 1.800.634.4773

LOTS OF COUNTER SPACE



Main Level



Second Level



PLAN CODE: BHP010029

Type: Greek Revival **5-SET \$1,070**

Square Footage: 2,507 **8-SET \$1,150**

Bonus Space: 252 sq. ft. **REPRO \$1,385**

Bedrooms: 4 **CAD \$2,400**

Bathrooms: 3 **PDF \$1,385**

Dimensions:
55' 0" W x 47' 10" D

Foundation:
Crawlspace, Slab, Unfinished Walkout Basement

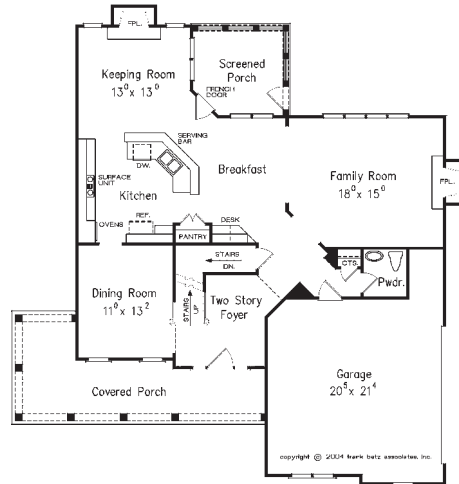
Order online at builderhouseplans.com or call 1.800.634.4773

VERSATILE BONUS ROOM

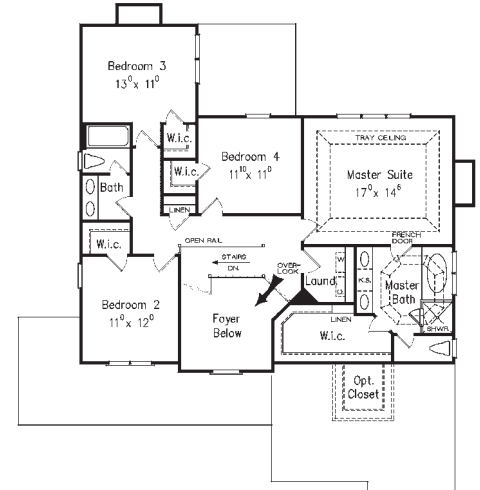


PLAN CODE: BHP010030

Type: Country	5-SET \$995
Square Footage: 2,443	8-SET \$1,075
Bedrooms: 4	REPRO \$1,275
Bathrooms: 2 1/2	CAD \$2,205
Dimensions: 52' 4" W x 55' 10" D	PDF \$1,275
Foundation: Crawlspace, Slab, Unfinished Walkout Basement	



Main Level



Second Level

Order online at builderhouseplans.com or call 1.800.634.4773

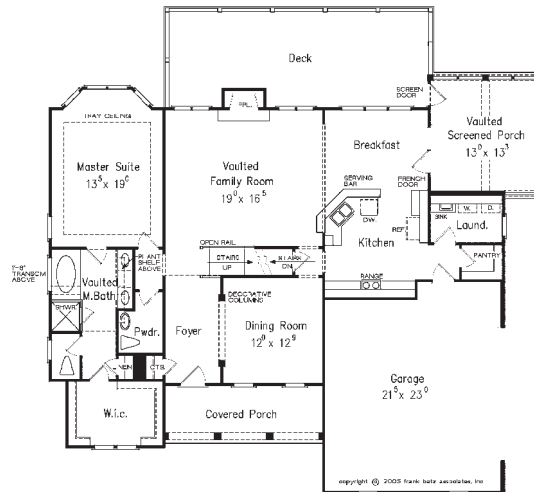
PHOTO COURTESY OF FRANK BETZ ASSOCIATES, INC.

PERENNIAL BESTSELLER

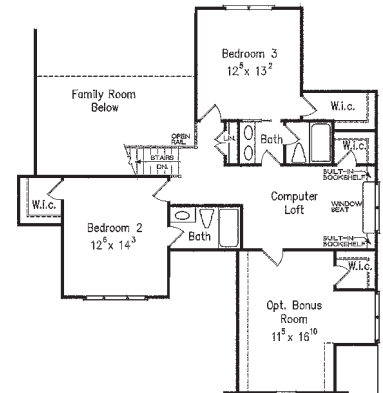


PLAN CODE: BHP010031

Type: Craftsman	5-SET \$995
Square Footage: 2,431	8-SET \$1,075
Bonus Space: 263	REPRO \$1,275
Bedrooms: 3	CAD \$2,205
Bathrooms: 3 1/2	PDF \$1,275
Dimensions: 59' 8" W x 50' 6" D	
Foundation: Crawlspace, Slab, Unfinished Walkout Basement	



Main Level



Second Level

Order online at builderhouseplans.com or call 1.800.634.4773

PHOTO CREDITS GO HERE

IDEAL FOR A VIEW LOT

Two-Story Homes



PLAN CODE: BHP010032

Type: Greek Revival

5-SET \$995

Square Footage: 2,426

8-SET \$1,075

Bonus Space: 290 sq. ft.

REPRO \$1,275

Bedrooms: 4

CAD \$2,205

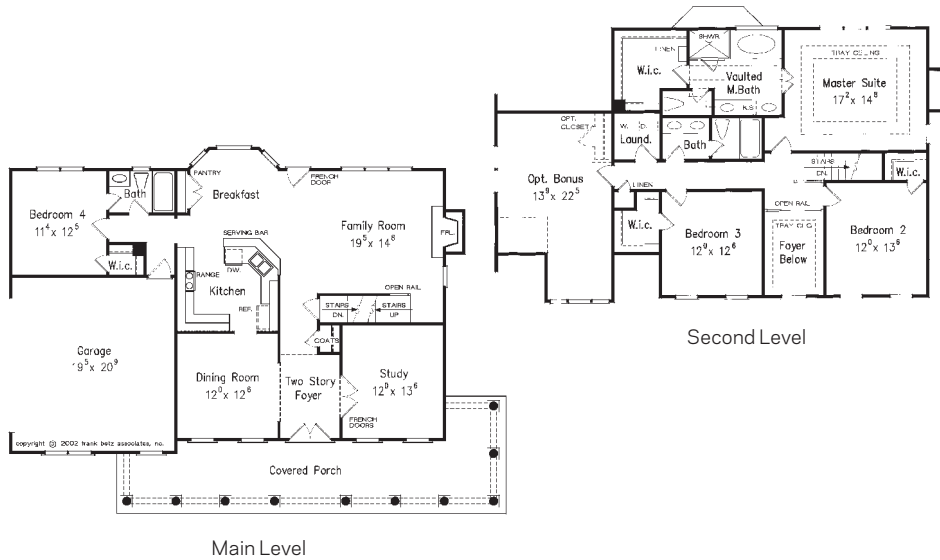
Bathrooms: 3

PDF \$1,275

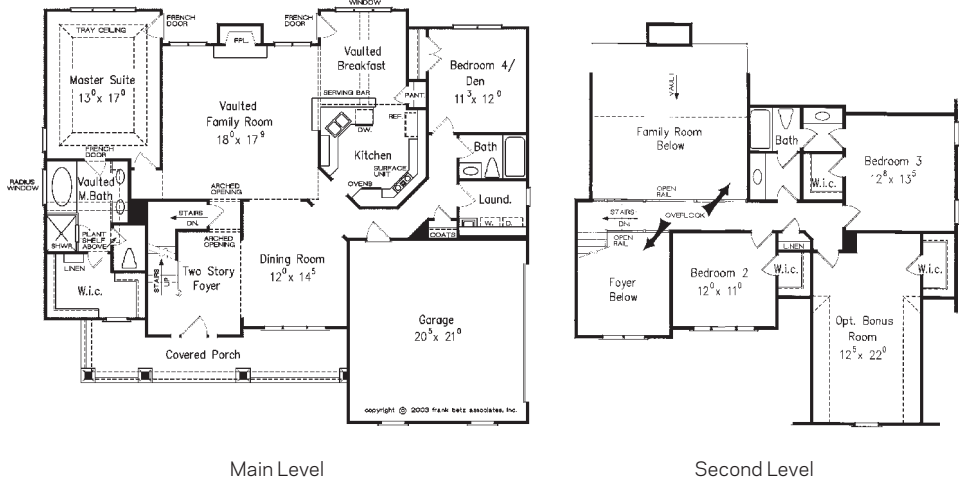
Dimensions:
58' 0" W x 42' 6" D

Foundation: Crawlpace,
Slab, Unfinished Walkout
Basement

Order online at builderhouseplans.com
or call 1.800.634.4773



STUNNING FRONT PORCH



PLAN CODE: BHP010033

Type: Craftsman

5-SET \$995

Square Footage: 2,338

8-SET \$1,075

Bonus Space: 305 sq. ft.

REPRO \$1,275

Bedrooms: 4

CAD \$2,205

Bathrooms: 3

PDF \$1,275

Dimensions:
56' 0" W x 48' 0" D

Foundation: Crawlpace,
Unfinished Walkout
Basement

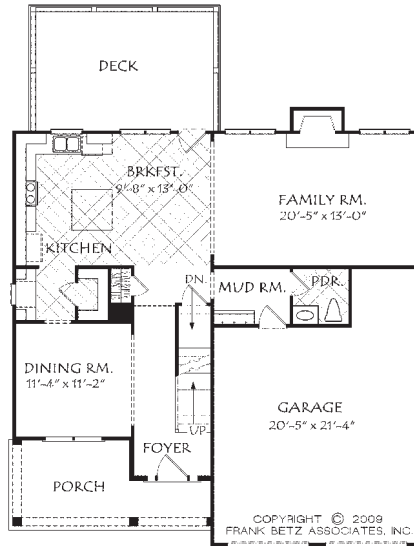
Order online at builderhouseplans.com
or call 1.800.634.4773

HOT ON SOCIAL MEDIA

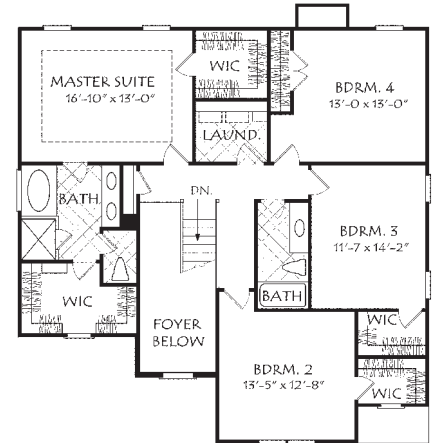


PLAN CODE: BHP010034

Type: Cottage	5-SET \$995
Square Footage: 2,328	8-SET \$1,075
Bedrooms: 4	REPRO \$1,275
Bathrooms: 2 1/2	CAD \$2,205
Dimensions: 40' 6" W x 43' 4" D	PDF \$1,275
Foundation: Crawlspace, Slab, Unfinished Basement	



Main Level



Second Level

Order online at builderhouseplans.com or call 1.800.634.4773

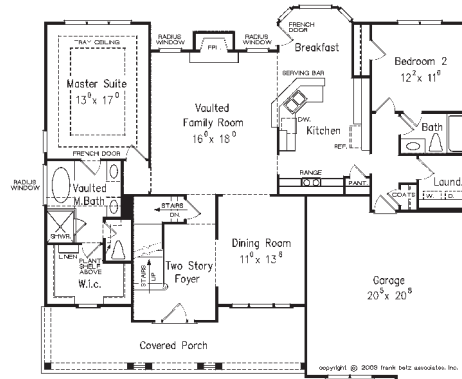
PHOTO COURTESY OF GRANT HOMES

SERIOUS ABOUT STORAGE

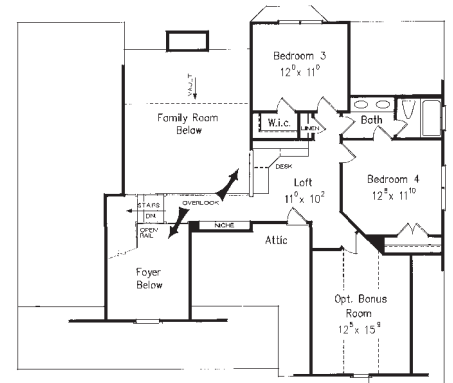


PLAN CODE: BHP010035

Type: Country	5-SET \$995
Square Footage: 2,286	8-SET \$1,075
Bonus Space: 211 sq. ft.	REPRO \$1,275
Bedrooms: 4	CAD \$2,205
Bathrooms: 3	PDF \$1,275
Dimensions: 54' 0" W x 48' 0" D	
Foundation: Crawlspace, Slab, Unfinished Walkout Basement	



Main Level



Second Level

Order online at builderhouseplans.com or call 1.800.634.4773

PHOTO CREDITS GO HERE

WIDE APPEAL

Two-Story Homes



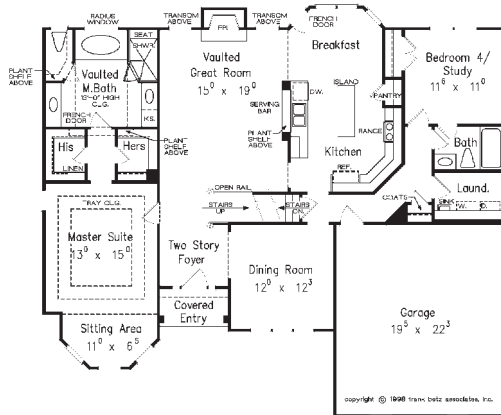
PLAN CODE: BHP010036

Type: New American	5-SET \$1,070
Square Footage: 2,286	8-SET \$1,150
Bonus Space: 262 sq. ft.	REPRO \$1,385
Bedrooms: 4	CAD \$2,400
Bathrooms: 3	PDF \$1,385

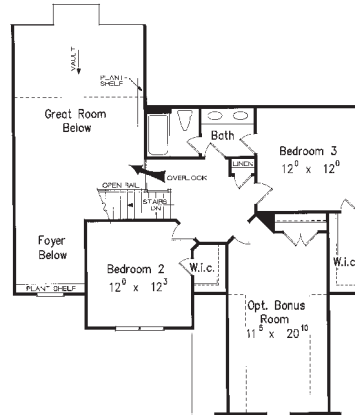
Dimensions:
55' 0" W x 48' 0" D

Foundation:
Crawlspace, Slab,
Unfinished Walkout
Basement

**Order online at builderhouseplans.com
or call 1.800.634.4773**

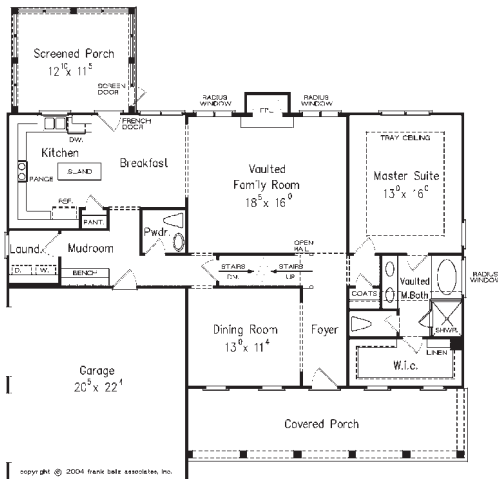


Main Level

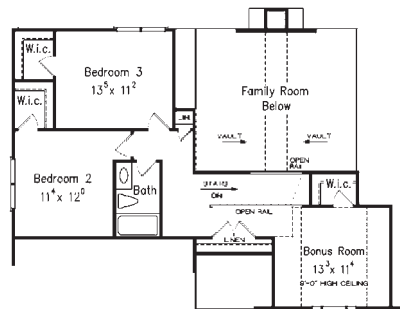


Second Level

TURRETED MASTER SUITE



Main Level



Second Level



PLAN CODE: BHP010037

Type: Cape Cod	5-SET \$995
Square Footage: 2,182	8-SET \$1,075
Bonus Space: 150 sq. ft.	REPRO \$1,275
Bedrooms: 3	CAD \$2,205
Bathrooms: 2 1/2	PDF \$1,275

Dimensions:
53' 0" W x 55' 0" D

Foundation:
Crawlspace, Slab,
Unfinished Walkout
Basement

**Order online at builderhouseplans.com
or call 1.800.634.4773**

WALK-IN CLOSETS FOR ALL

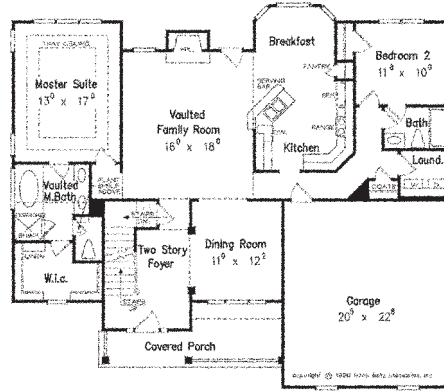


PLAN CODE: BHP0100038

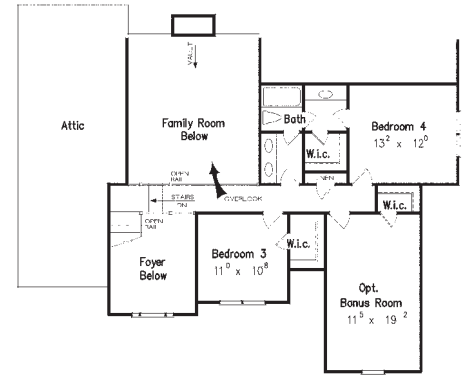
Type: Country	5-SET \$995
Square Footage: 2,163	8-SET \$1,075
Bonus Space: 250 sq. ft.	REPRO \$1,275
Bedrooms: 4	CAD \$2,205
Bathrooms: 3	PDF \$1,275
Dimensions: 54' 0" W x 47' 0" D	
Foundation: Crawlspace, Slab, Unfinished Walkout Basement	

Order online at builderhouseplans.com
or call 1.800.634.4773

PHOTO BY BRYAN WILLY PHOTOGRAPHY



Main Level



Second Level

FLEXIBLE GUEST SUITE

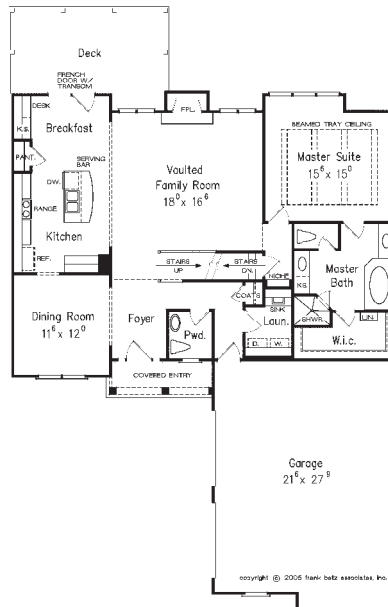


PLAN CODE: BHP0100039

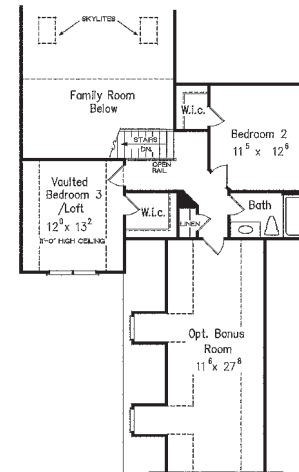
Type: Cottage	5-SET \$960
Square Footage: 1,975	8-SET \$1,000
Bonus Space: 368 sq. ft.	REPRO \$1,180
Bedrooms: 3	CAD \$2,040
Bathrooms: 2 1/2	PDF \$1,180
Dimensions: 46' 0" W x 62' 0" D	
Foundation: Crawlspace, Slab, Unfinished Walkout Basement	

Order online at builderhouseplans.com
or call 1.800.634.4773

PHOTO BY BRYAN WILLY PHOTOGRAPHY

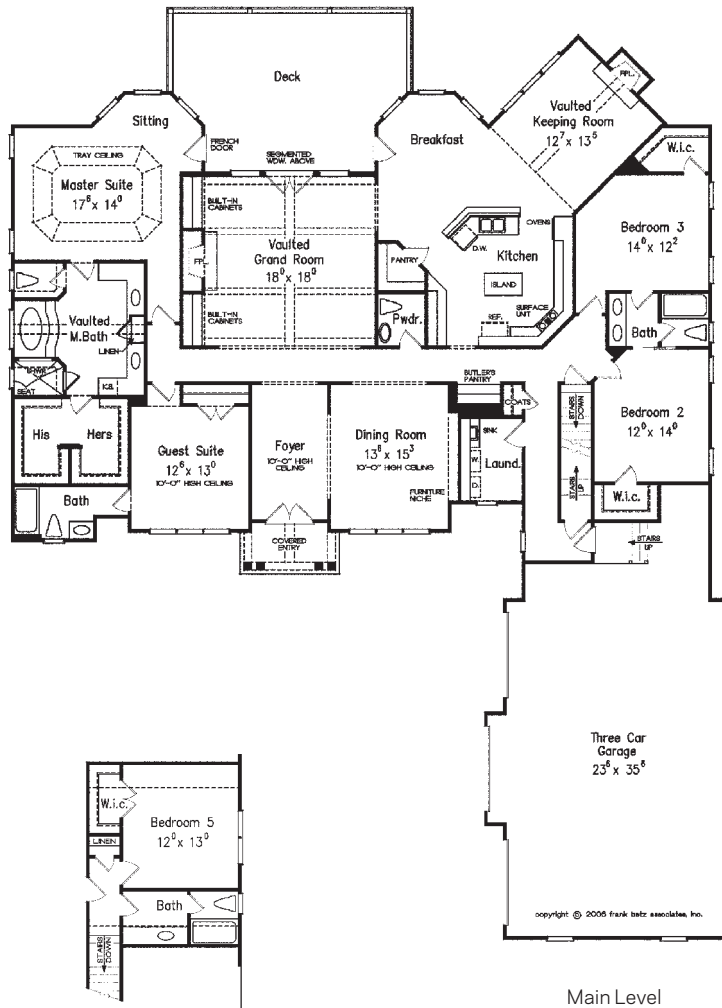


Main Level



Second Level

HUGE BONUS ROOM



Optional Bonus Space

Main Level



ATTENTION TO DETAIL

Red brick garners curb appeal in any neighborhood, and this house is no exception. The interior is equally stunning with unexpected flourishes at every turn. Open, spacious rooms are replete with luxe amenities, including decorative ceiling treatments, multiple fireplaces, and built-ins. Four bedrooms are amply housed on one level with the master suite as the highlight. Don't miss the impressive gourmet kitchen.

PLAN CODE: BHP0100040

Type: Cottage
Square Footage: 3,206
Optional Bonus Space: 309 sq. ft.
Bedrooms: 4
Bathrooms: 3 ½
Dimensions: 76' 0" W x 95' 6" D
Foundation: Crawlpace, Slab, Unfinished Walkout Basement

5-SET \$1,160
8-SET \$1,235
REPRO \$1,485
CAD \$2,565
PDF \$1,485

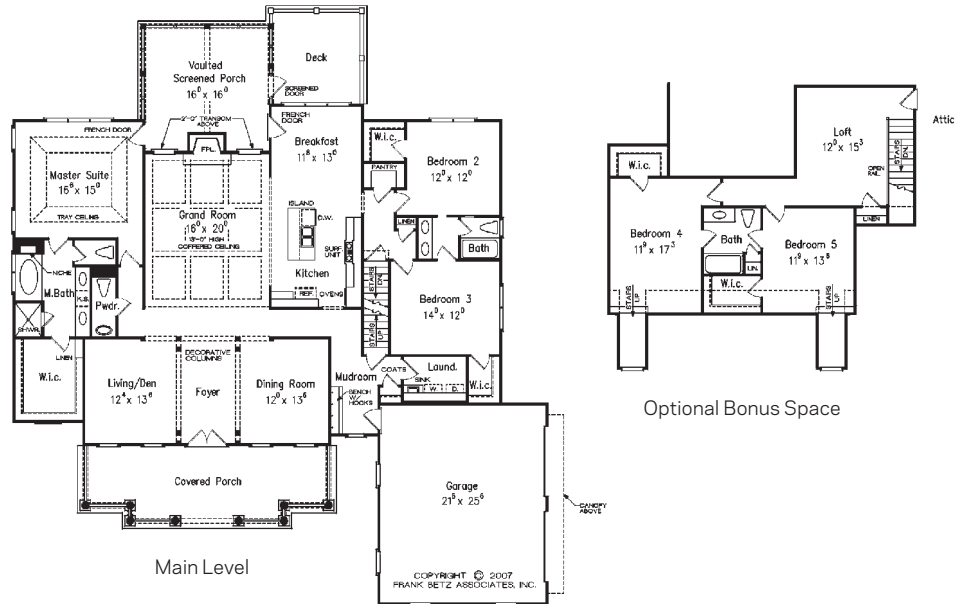
Order online at builderhouseplans.com or call 1.800.634.4773



PLAN CODE: BHP010042

Type: Cape Cod	5-SET \$995
Square Footage: 2,490	8-SET \$1,075
Bonus Space: 846 sq. ft.	REPRO \$1,275
Bedrooms: 3	CAD \$2,205
Bathrooms: 2 1/2	PDF \$1,275
Dimensions: 69'0" W x 74'10" D	
Foundation: Crawlspace, Unfinished Walkout Basement	

Order online at builderhouseplans.com
or call 1.800.634.4773



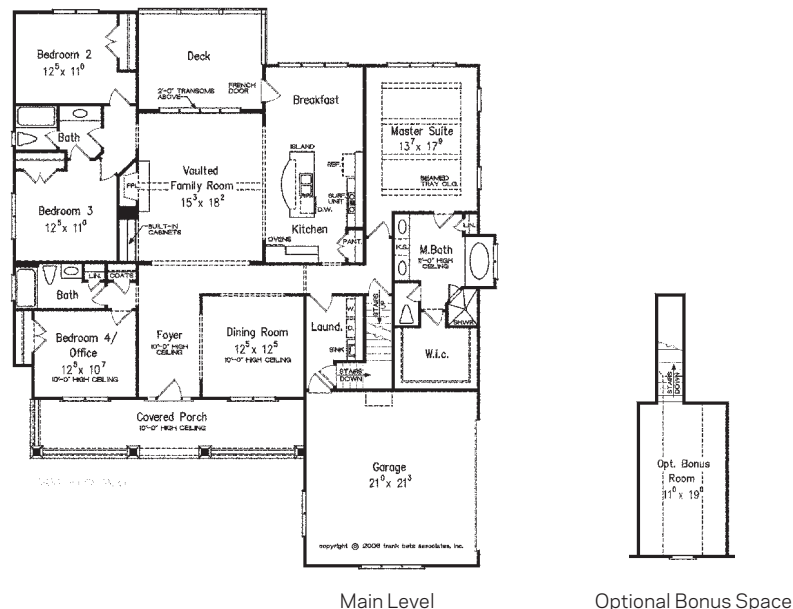
VAULTED SCREENED PORCH



PLAN CODE: BHP010043

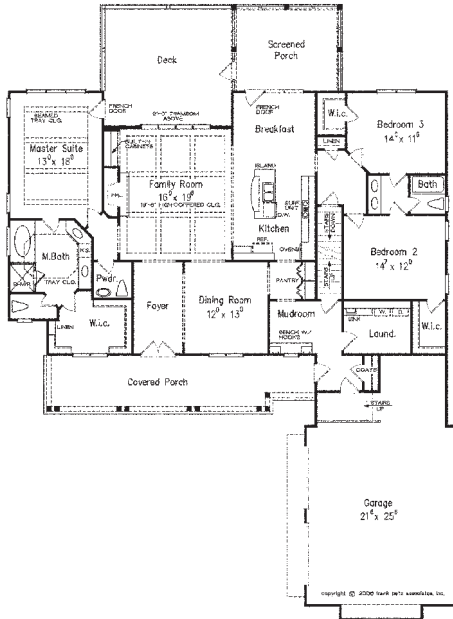
Type: Cottage	5-SET \$995
Square Footage: 2,336	8-SET \$1,075
Bonus Space: 227 sq. ft.	REPRO \$1,275
Bedrooms: 4	CAD \$2,205
Bathrooms: 3	PDF \$1,275
Dimensions: 59'0" W x 68'0" D	
Foundation: Crawlspace, Unfinished Walkout Basement	

Order online at builderhouseplans.com
or call 1.800.634.4773

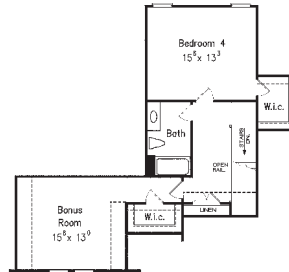


SURPRISINGLY MODERN INSIDE

One-Story Homes



Main Level



Optional Bonus Space



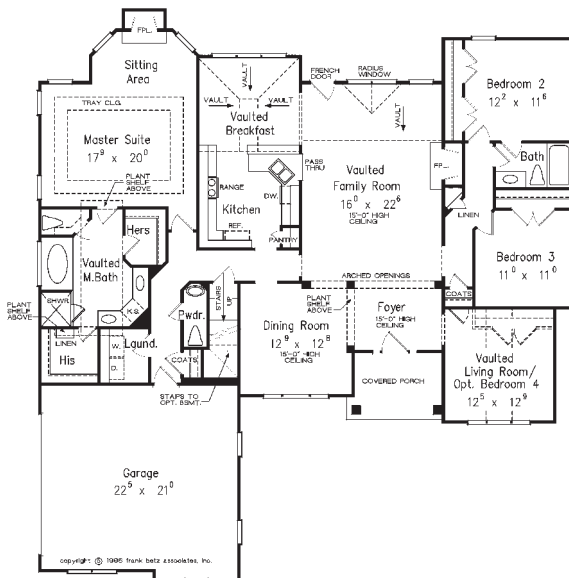
PLAN CODE: BHP0100044

Type: Craftsman	5-SET \$995
Square Footage: 2,325	8-SET \$1,075
Bonus Space: 725 sq. ft.	REPRO \$1,275
Bedrooms: 3	CAD \$2,205
Bathrooms: 2 1/2	PDF \$1,275
Dimensions: 64' 6" W x 88' 4" D	
Foundation: CrawlSpace, Slab, Unfinished Walkout Basement	

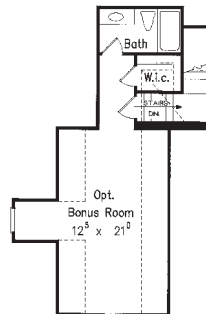
Order online at builderhouseplans.com or call 1.800.634.4773

PHOTO COURTESY OF FRANK BETZ ASSOCIATES, INC.

WELL-ORGANIZED MUD ROOM



Main Level



Optional Bonus Space



PLAN CODE: BHP0100045

Type: New American	5-SET \$995
Square Footage: 2,311	8-SET \$1,075
Bonus Space: 425 sq. ft.	REPRO \$1,275
Bedrooms: 4	CAD \$2,205
Bathrooms: 2 1/2	PDF \$1,275
Dimensions: 61' 0" W x 65' 4" D	
Foundation: CrawlSpace, Slab, Unfinished Walkout Basement	

Order online at builderhouseplans.com or call 1.800.634.4773

PHOTO BY DOUG HUGHES

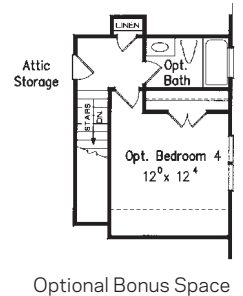
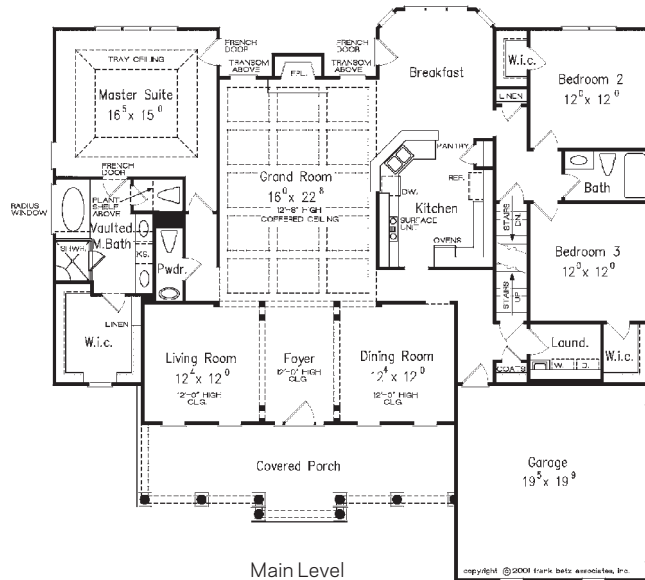
COZY MASTER SITTING ROOM



PLAN CODE: BHP0100046

Type: Colonial	5-SET \$995
Square Footage: 2,296	8-SET \$1,075
Bonus Space: 286 sq. ft.	REPRO \$1,275
Bedrooms: 3	CAD \$2,205
Bathrooms: 2 1/2	PDF \$1,275
Dimensions: 61'0" W x 58'6" D	
Foundation: Crawlspace, Slab, Unfinished Walkout Basement	

Order online at builderhouseplans.com
or call 1.800.634.4773



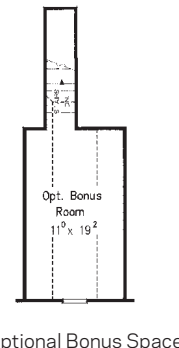
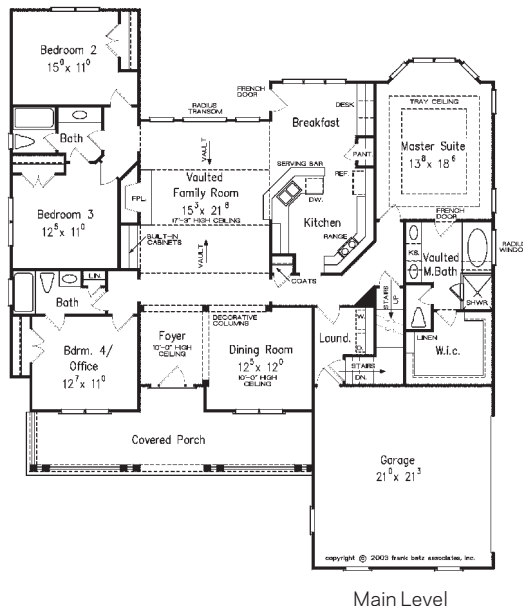
CHARMING COLONIAL



PLAN CODE: BHP0100047

Type: Country	5-SET \$995
Square Footage: 2,211	8-SET \$1,075
Bonus Space: 227 sq. ft.	REPRO \$1,275
Bedrooms: 4	CAD \$2,205
Bathrooms: 3	PDF \$1,275
Dimensions: 57'0" W x 66'0" D	
Foundation: Crawlspace, Slab, Unfinished Walkout Basement	

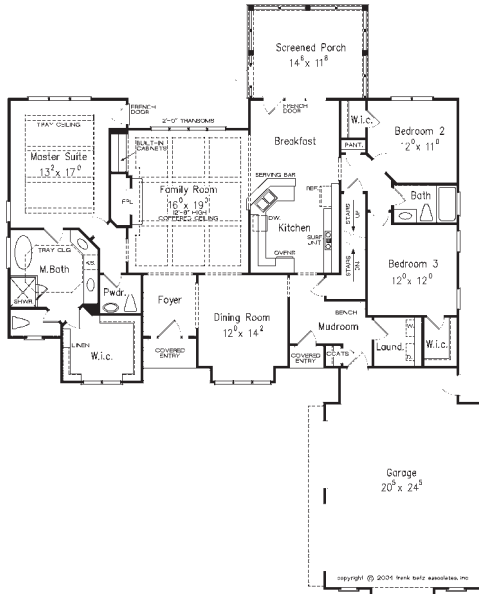
Order online at builderhouseplans.com
or call 1.800.634.4773



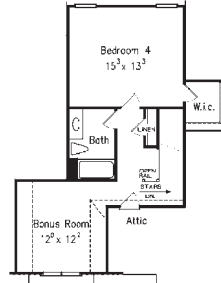
GOOD VIEW FROM FOYER

PHOTO BY ERIC TAYLOR, FRANK BETZ ASSOCIATES, INC.

One-Story Homes



Main Level



Optional Bonus Space

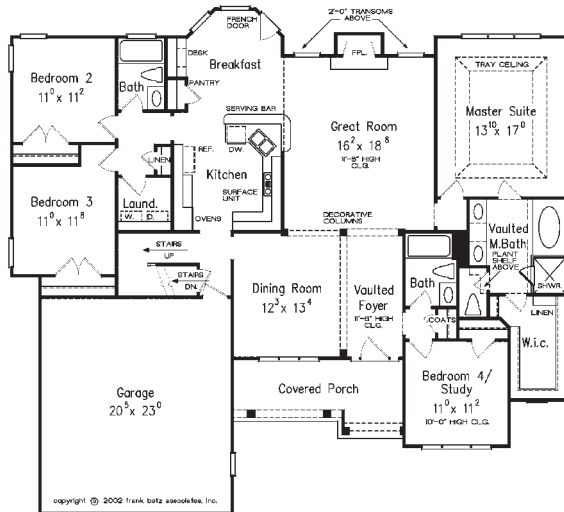


PLAN CODE: BHP010048

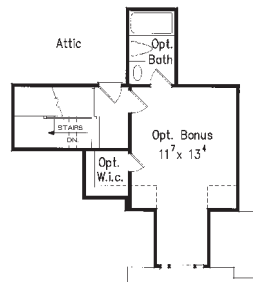
Type: French Country	5-SET \$995
Square Footage: 2,066	8-SET \$1,075
Bonus Space: 556 sq. ft.	REPRO \$1,275
Bedrooms: 3	CAD \$2,205
Bathrooms: 2 1/2	PDF \$1,275
Dimensions: 63' 0" W x 79' 4" D	
Foundation: Crawlspace, Slab, Unfinished Walkout Basement	

Order online at builderhouseplans.com or call 1.800.634.4773

TWO FRONT ENTRANCES



Main Level



Optional Bonus Space



PLAN CODE: BHP010049

Type: French Country	5-SET \$960
Square Footage: 2,054	8-SET \$1,000
Bonus Space: 306 sq. ft.	REPRO \$1,180
Bedrooms: 4	CAD \$2,040
Bathrooms: 3	PDF \$1,180
Dimensions: 60' 0" W x 54' 6" D	
Foundation: Crawlspace, Slab, Unfinished Walkout Basement	

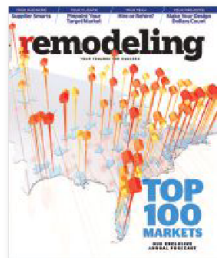
Order online at builderhouseplans.com or call 1.800.634.4773

OPTIONAL SUITE UPSTAIRS

Order online at **builderhouseplans.com** or call **1.800.634.4773**

BuilderHousePlans.com is owned and operated by Hanley Wood, the premier information, media, event, and strategic marketing services company serving the residential and commercial design and construction industries.

Our industry-leading publications include:



The official magazine of the National Association of Home Builders

The official magazine of the American Institute of Architects

With more than 65 years of experience in the stock home plans industry, our Home Plans Group is the market leader in providing high-quality, high-value, pre-drawn home plans. We operate five e-commerce websites including builderhouseplans.com, eplans.com, and homeplans.com.

Why Shop at BuilderHousePlans.com?



The Lowest Price, Guaranteed!

If you find the same plan elsewhere for a better price, we'll match it.

Discounts for Professional Builders

Our Builder Advantage program rewards you for repeat purchases - up to 15% off!

Free Shipping!

We offer FREE ground shipping, and FREE modification quotes for most plans.

28,000+ Designs from More Than 300 Designers

Our vast selection of high-quality plans means you're sure to find the perfect plan.

We're the Industry's #1 Choice

Professional builders buy more plans from us than from anyone else.

Experienced Customer Service team

Have questions? Our experienced customer service representatives can help. Just call, email, or visit www.builderhouseplans.com to chat with a live person.



Satisfaction Guaranteed

We offer the best exchange policy in the industry, so you can buy with confidence.

UPGRADES: We offer a 90-day upgrade policy. We will be happy to upgrade blueprint orders to CAD, PDF, and Reproducible plan packages (price differences may apply). Orders originating as CAD, PDF, and Reproducible Plan Packages cannot be upgraded. Please note that the entire content of your original order must be returned before the upgrade will be processed. Call our customer service department at 1.888.690.1116 for your return authorization number and shipping instructions.

EXCHANGES: With the exception of CAD, PDF, and Reproducible Plan Packages, we will exchange your blueprint order for another plan from our collection within 90 days of the original order.

Please call our customer service department at 1.888.690.1116 for your return authorization number and shipping instructions. A restocking fee of 20% of the amount of the original order will be applied, plus the difference in cost if exchanging for a higher-priced plan. Shipping and handling charges are not refundable. Please note that you will need to place your new order before your credit is processed. If the returned blueprints show signs that they have been used, redlined, or copied, we cannot process the exchange. CAD, PDF, and Reproducible Plan Packages are not eligible for exchange.

ADDITIONAL SERVICES:

Modifications

Our full-service design professionals can customize just about any plan that is available in Repro, PDF, or CAD format. A cost estimate can be provided within two business days, and is free for most plans.

Lighting Design and AV Planning

Take your homes to the next level with 21st-century technology solutions from Assurity Design Group. ADG provides professional lighting design, lighting control, and top notch audio-video systems. Plus, save money by receiving low, pre-negotiated prices on all equipment including pre-wire material from Neowatt.

Cost-to-Build Calculator

The StartBuild Cost-to-Build Calculator is the most accurate cost estimator on the market. Experiment with different material choices and change home features with a few clicks. All estimates are specific to your geographic region.

ADDITIONAL PRODUCTS:

Many plans include the following options:

- Right-Reading Reverse
- Materials List
- Alternate Foundations
- Alternate Wall Framing

We also offer:

- Garage Plans
- Deck Plans
- Landscape Plans
- Outbuilding and Project Plans

Order online at builderhouseplans.com or call 1.800.634.4773

What's In a Set

While the contents of each blueprint package may vary, each contains detailed, high-quality working drawings that show you exactly how your house is to be built. You can expect to find the following standard elements in most plan sets:

1. Detailed Floor Plans
2. Exterior Elevations

Depending on the home you choose, your order may also include:

3. Front Perspective
4. Foundation and Basement Plans
5. Detailed Cross-Sections
6. Structural Information



Important

Building Codes and Zoning Requirements

Each plan was designed to meet or exceed the requirements of a nationally recognized model building code in effect at the time and place the plan was drawn. However, plans may need to be modified to comply with local requirements. In addition, you may need to obtain permits or inspections from local governments before and in the course of construction.

Architectural and Engineering Seals

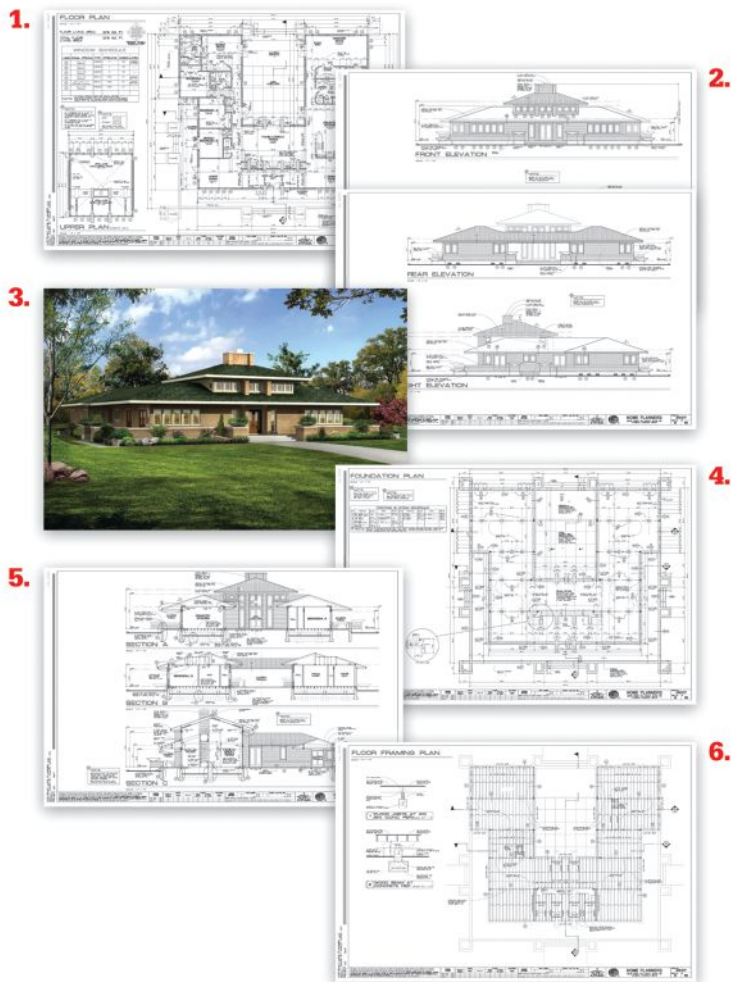
Some cities and states require that a licensed architect or engineer review and seal a blueprint prior to construction. Before applying for a building permit or starting construction, you must consult your local building official who can tell you if such a review is required.

Nevada residents

Nevada law requires your plans to be redrawn by a Nevada-registered professional. Consult your local building official for more information.

Disclaimer

Our licensed designers have put substantial care and effort into the creation of their blueprints. However, because we cannot provide on-site consultation, supervision, and control over actual construction, and because of the great variance in local building requirements, building practices, and soil, seismic, weather, and other conditions, we make no warranty of any kind, expressed or implied, with respect to the content or use of the blueprints, including but not limited to any warranty of merchantability or fitness for a particular purpose. Photographed homes may have been modified from original design. Please check floor plans carefully. Items, prices, terms and conditions are subject to change without notice.



Copyright

These designs are intellectual property and as such are protected under the terms of United States copyright law. It is ILLEGAL to do any of the following:

- Copy designs or floor plans from any publication, electronic media, or existing home
- Make copies of or modifications to your plan (unless you have purchased a package that includes a license to do so)
- Build more than one home from your plan (unless you have purchased a multiple or unlimited use license)

Any of these actions may incur substantial penalties. Avoid legal action by purchasing any home plan that you intend to use in any way, along with the proper license for your intended use.



House Plans

Visit **BuilderHousePlans.com** today to take advantage of these great benefits

- Over 28,000 plans, including thousands of designs from Hanley Wood's exclusive, award-winning design partners
- Free shipping
- Free modification quotes
- Low price guarantee
- Builder Advantage Program to help you save on multiple plan purchases

Check out the new **BuilderHousePlans.com!**

We've updated our website to offer you

- A cleaner, more accessible layout
- More robust search and filter capabilities
- Free tools to save plans and searches
- Curated collections to address builder challenges
- Bigger, better images