

A feeling of well-being to your living space all year round

Quiet operation, elegance and slim design make i-LIFE Slim the perfect solution for any type of ambient.



Silent operation

Thanks to the continuous fan speed modulation, i-LIFE Slim ensures very low sound levels to maintain the temperature values.

The i-LIFE R-Slim also features a unique technology. Once the desired temperature in heating is reached, the fan switch off automatically and the radiant panel contributes to maintain the temperature constant. With this principle, the terminal provides significant power while heating, without running the main fan.

In this way, comfort temperature is maintained through operations with no special air movements and in absolute silence.

Best air quality

Here is the evidence: we can breathe cleaner air!

i-LIFE Slim is equipped with UVC emitter inside the unit. This system helps the ambient sterilization and ensures a high quality of indoor air treatment.

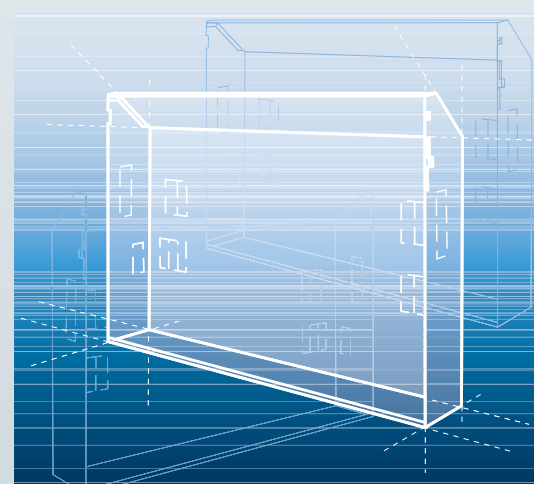
It is well-known that UVC rays do have high antibacterial efficacy. The use of this component guarantees a cleaner and more healthy ambient and provides a feeling of well-being and relax.

Easy to install

i-LIFE Slim makes the installation quick and easy.

The mounting template included on the packaging allows a simple and very quick installation of the unit. Thanks to its reduced width, the built-in version can be easily mounted in all kinds of walls and false ceilings, even shallow ones.

Few and easy operations allow to access the inside of the fan coil in order to make easier cleaning of the drain pan and the filter. The maintenance of the fan coil has never been so simple.



Climaveneta S.p.A.
Via Sarson 57/c
36061 Bassano del Grappa (VI)
Italy
Tel +39 0424 509 500
Fax +39 0424 509 509
info@climaveneta.com
www.climaveneta.com

Climaveneta France
3, Village d'Entreprises
ZA de la Couronne des Prés
Avenue de la Mauldre
78680 Epône
France
Tel +33 (0)1 30 95 19 19
Fax +33 (0)1 30 95 18 18
info@climaveneta.fr
www.climaveneta.fr

Climaveneta Deutschland
Rhenus Platz 2
59439 Holzwickede
Germany
Tel +49 2301 91222-0
Fax +49 2301 91222-99
info@climaveneta.de
www.climaveneta.de

Climaveneta España - Top Clima
Londres 67, 1º 4º
08036 Barcelona
Spain
Tel +34 934 195 600
Fax +34 934 195 602
topclima@topclima.com
www.climaveneta.com

**Climaveneta Chat Union
Refrig. Equipment Co Ltd**
88 Bai Yun Rd, Pudong Xinghuo
New dev. zone 201419 Shanghai
China
Tel 008 621 575 055 66
Fax 008 621 575 057 97

Climaveneta Polska Sp. z o.o.
Ul. Sienkiewicza 13A,
05-120 Legionowo,
Poland
Tel +48 22 766 34 55-57
Fax +48 22 784 39 09
info@climaveneta.pl
www.climaveneta.pl

**Climaveneta
Climate Technologies (P) Ltd**
#3487, 14th Main, HAL 2nd stage,
Indiranagar, Bangalore 560008
India
Tel:+91-80-42466900 - 949,
Fax: +91-80-25203540
sales@climaveneta.in

Climaveneta UK LTD.
Highlands Road,
Shirley Solihull
West Midlands B90 4NL
Tel: +44 (0)871 663 0664
Fax: +44 (0)871 663 1664
Freephone: 0800 801 819
response@climaveneta.co.uk
www.climaveneta.co.uk



i-LIFE Slim

The new i-LIFE Slim fan coil, with inverter technology for heating, cooling and dehumidifying. Its elegant design with only 13 cm depth makes i-LIFE Slim the perfect solution for residential applications.

Also available with the new i-LIFE R-Slim inverter and radiant panel version.



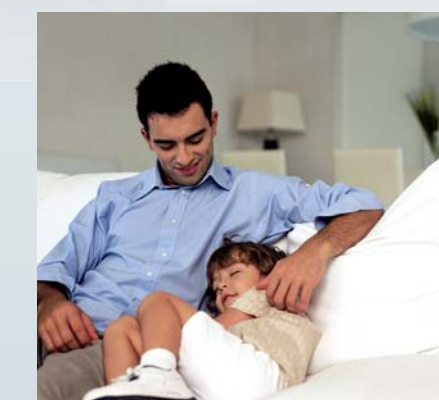
Perfect comfort



Real energy savings



Silent operation



i-LIFE Slim

The perfect synergy between elegance, comfort and costs savings

i-LIFE Slim is the new Climaveneta's answer to the residential comfort. It represents a new range of hydronic terminals with high performance and versatility.

Perfect Comfort

The i-LIFE Slim fan coil is the synonym of perfect comfort and reduced energy consumption.

The brushless motor allows for a perfect adaptation to thermal load, without any temperature fluctuation. Centrifugal fans operate through continuous air flow modulation, with no speed steps or relay switching as traditional fan coil units.

i-LIFE Slim has been designed to maintain constant temperature, and minimum noise level.

Real energy savings

The i-LIFE Slim features an electrical absorption of about 50% lower than traditional fan coil units.

High efficiency is guaranteed in any HVAC installation setup, in combination with any low temperature heat generators such as heat pumps, boilers and solar panel systems.

Elegance

i-LIFE Slim represents an advanced solution for the requirements of modern residential and commercial architecture, even more sensible to design and aesthetics.

Designed to blend into any kind of setting and home, it features a refined design and elegance. Its particular slimmness - just 13 cm deep, has been obtained thanks to the innovative layout of the ventilation unit and the heat exchanger.



i-LIFE Slim



A new way to live comfort

The excellent performance in terms of energy efficiency, silence and quality of comfort that feature i-LIFE Slim comes from cutting-edge technologies and refined design, resulting from Climaveneta's experience and know-how.

Cabinet

i-LIFE Slim elegant layout has been specifically designed to perfectly fit into the ambient.

The linear and modern design of its casing with minimal lines and gentle curves, is obtained by using high quality plastic materials combined with traditional galvanized steel sheet, epoxy powder painted.

Heat exchanger

The heat exchanger has an extensive front surface that ensures high airflows to be achieved with low pressure loss.

All units are supplied with hydraulic couplings on the left, easily convertible into attacks on the right with a simple rotation of the heat exchanger. This operation can be done easily at the construction site as well.

Fan

The fan is tangential with asymmetric blades and DC electronic inverter motor.

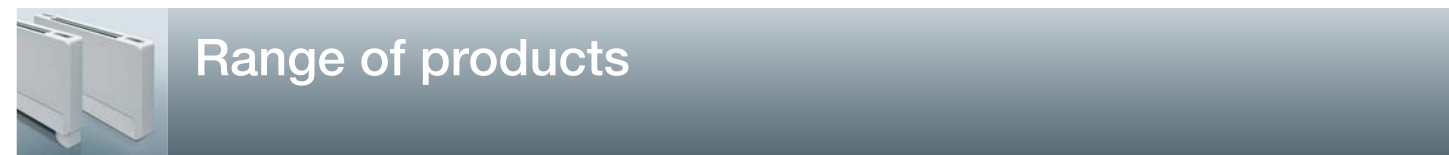
The fan speed is continuously modulated for a better comfort and real energy savings.

Air filter and front air intake

All the units are provided with honeycomb polypropylene filter which is regenerable with washing or blowing.

Easy access to the filter through the removable front grid in order to make the cleaning of the component easier.

Front grid Fan Air filter



Range of products

Thanks to 4 versions with cabinet and built-in mounting, for horizontal or vertical installation, the ideal solution is guaranteed for any project.

i-LIFE Slim / i-LIFE R-Slim

i-LIFE Slim DLMO



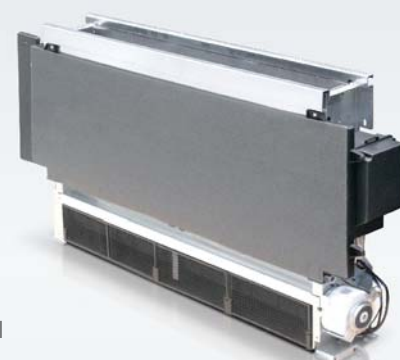
With cabinet, for horizontal installation

i-LIFE Slim DLMV



With cabinet, for vertical installation

i-LIFE Slim DLIU



Built-in version, for vertical/horizontal installation

i-LIFE R-Slim DLMV



With cabinet and radiating effect for vertical installation

i-LIFE Slim Box

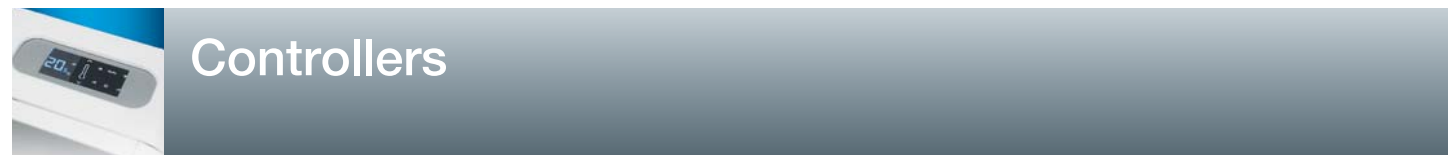


A solution to prepare already in the first stage of the construction, the positioning of i-LIFE Slim into the wall niches and render the execution of the system more rational, efficient and aesthetically harmonious

Simplified operations on the construction sites
During the first stages of the installation, the casing for built-in installation is

placed in the wall niche and the connections are prepared. The next positioning of the fan coil is easy and can be carried out when site operations are concluded.

Thanks to its reduced thickness, i-LIFE Slim can blend easily into all types of walls and false ceilings, even not thick ones.



Controllers

The wide range of available wall-mounted and on-board controllers, allows for a user-friendly and complete regulation of all the functions. The advanced management system with PID logic contributes to modulate the fan speed, maintaining a perfect temperature and humidity levels, reducing the sound emissions and ensuring a silent operation.



iKS

On-board control for unit with cabinet, complete with touch keypad with 8 touch keys, LCD display with white light symbols.
Modulating fan speed with PID logic, temperature regulation, winter/summer mode, automatic mode for the speed regulation, night mode for a silent operation.
Minimum water temperature probe and solenoid valve management.



iKSW+iHBS

Remote controller for built-in and with cabinet units complete with touch keypad with 8 touch keys, LCD display with white light symbols.

Modulating fan speed with PID logic, temperature regulation, winter/summer mode, automatic mode for the speed regulation, night mode for a silent operation. Minimum water temperature probe and solenoid valve management. A maximum of 31 fancoils can be connected to the iKSW controller for open space rooms.

Ad un solo comando iKSW possono essere collegati fino a 31 ventilconvettori per ambienti open space.

iHBS

Simple on-board controller for built-in and with cabinet units to be coupled with remote controller iKSW. iHBS controller has a touch button and a LED for the visualization of the device's operation. All the parameters are set up from the iKSW.

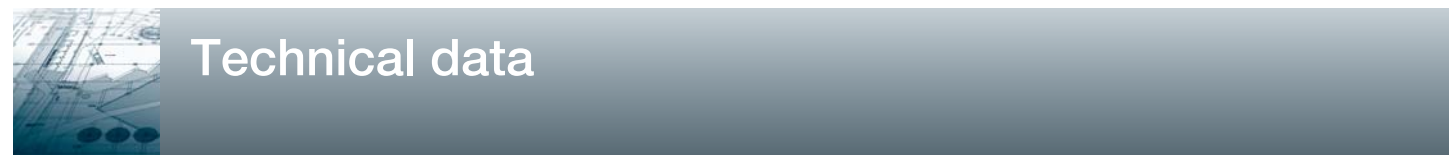
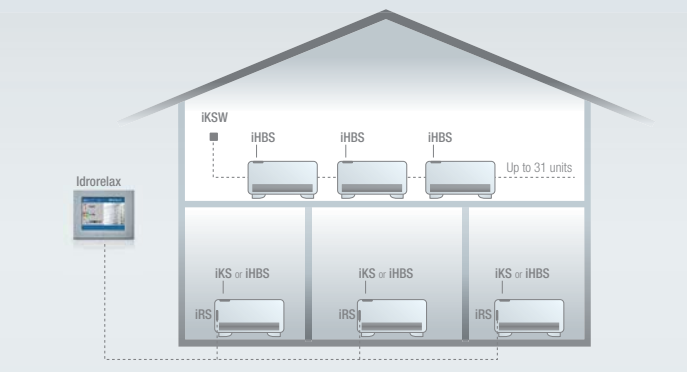
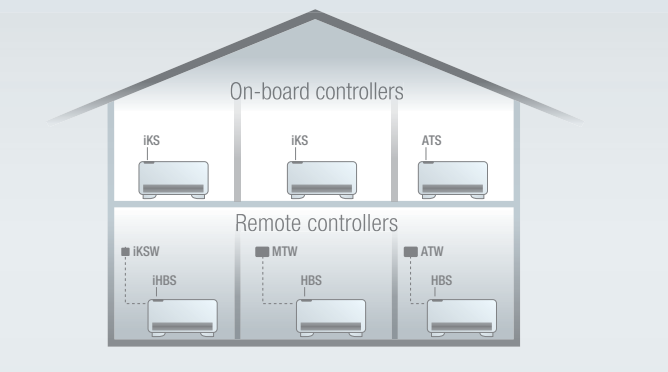
ATS

On-board controller for unit with cabinet. Interface with 4 keys for the temperature selection, winter/summer mode, 4 speed regulation, display for the visualization of the room temperature. Minimum water temperature probe and solenoid valve management.

ATW+HBS

Room thermostat for built-in and with cabinet units, manual and automatic speed regulation, room probe and minimum temperature probe. Control of solenoid valves, multifunctional digital contact. Dip switch configuration. ATW control must be coupled with the HBS power board.

On-board and remote controllers, stand alone configuration On-board and remote controllers, multiple connections and Idrorelax



Technical data

Model	i-LIFE Slim 102			i-LIFE Slim 202			i-LIFE Slim 302			i-LIFE Slim 402			i-LIFE Slim 502					
	DLM	DLRV	DLI	DLM	DLRV	DLI	DLM	DLRV	DLI	DLM	DLRV	DLI	DLM	DLRV	DLI			
Total cooling capacity	(a) kW			0,842	0,842	0,842	1,786	1,786	1,786	2,690	2,690	2,690	3,390	3,390	3,390	3,857	3,857	3,857
Sensible cooling capacity	kW			0,629	0,629	0,629	1,289	1,289	1,289	1,989	1,989	1,989	2,690	2,690	2,690	3,055	3,055	3,055
Water flow	l/h			145	145	145	307	307	307	463	463	463	583	583	583	663	663	663
Water pressure drop	kPa			7,2	7,2	7,2	8,4	8,4	8,4	22,5	22,5	22,5	18,6	18,6	18,6	24,9	24,9	24,9
Heating capacity with 50°C water inlet	(b) kW			1,106	1,167	1,106	2,385	2,497	2,385	3,238	3,461	3,238	4,162	4,466	4,162	4,933	5,278	4,933
Water flow (50 °C water at inlet)	l/h			190	201	190	410	429	410	557	595	557	716	768	716	848	908	848
Water pressure drop (50°C water at inlet)	kPa			5,7	6,5	5,7	6,6	7,5	6,6	16,3	20,2	16,3	14	16,7	14	18,3	22,4	18,3
Heating capacity without ventilation (50°C)	kW			0,213	0,325	0,213	0,251	0,386	0,251	0,295	0,467	0,295	0,371	0,558	0,371	0,456	0,670	0,456
Heating capacity with 70°C water inlet ΔT 10	(c) W			1,918	2,050	1,918	4,050	4,212	4,050	5,552	5,887	5,552	7,085	7,613	7,085	8,425	8,729	8,425
Water flow (70°C ΔT 10)	l/h			330	353	330	697	725	697	955	1013	955	1219	1309	1219	1449	1501	1449
Water pressure drop (70°C ΔT 10)	kPa			6,7	7,2	6,7	7,6	8,2	7,6	16,1	21,2	16,1	14	17,7	14	19,8	23,8	19,8
Heating capacity without ventilation (70°C)	W			0,327	0,548	0,327	0,385	0,680	0,385	0,454	0,792	0,454	0,571	0,934	0,571	0,700	1,096	0,700
AERAILIC DATA																		
Maximum airflow	(d) m³/h			162	162	162	320	320	320	461	461	461	576	576	576	648	648	648
Airflow at medium speed (AUTO mode)	m³/h			113	113	113	252	252	252	367	367	367	453	453	453	494	494	494
Airflow at minimum ventilation speed	m³/h			55	55	55	155	155	155	248	248	248	370	370	370	426	426	426
Power absorbed at maximum speed	W			12	13	12	18	19	18	20	21	20	27	28	27	30	31	30
Power absorbed at minimum speed	W			4	5	4	5	6	5	5	6	5	6	7	6	6	7	6
SOUND POWER LEVEL																		
Sound level at maximum speed	(g) dB(A)			50,4	50,4	50,4	51,2	51,2	51,2	53,2	53,2	53,2	53,5	53,5	53,5	54,9	54,9	54,9
Sound level at minimum speed	(g) dB(A)			35,2	35,2	35,2	36,3	36,3	36,3	36,6	36,6	36,6	37,3	37,3	37,3	38,6	38,6	38,6
DIMENSIONS AND WEIGHTS																		
Width	L mm		720	720	525	920	920	725	1120	1120	925	1320	1320	1125	1520	1520	1325	
Height (without support feet)	H mm		579	579	579	579	579	579	579	579	579	579	579	579	579	579	579	
Depth	P mm		131	131	126	131	131	126	131	131	126	131	131	126	131	131	126	
Net Weight	Kg		17	17,3	9	20	20,4	12	23	23,4	15	26	26,4	18	29	29,4	21	

Data referred to:	Main accessories:
(a) Water temperature at battery inlet 7°C, Water temperature at battery outlet 12°C, ambient air temperature 27°C b.s. e 19°C b.u.	- 2 way and 3 way valves
(b) Water temperature at battery inlet 50°C, water temperature with thermal variation 5°C, ambient air temperature 20°C	- Fitting for air intake in built-in installation
(c) Water temperature at battery inlet 70°C, Water temperature at battery outlet 60°C, ambient air temperature 20°C	- Telescopic air flow duct and 90° duct for false ceiling and built-in installation
(d) Airflow measured with clean filters	- Aluminium air flow vent for wall mounting
(g) Sound level measured in semianechoic chamber in compliance with ISO 7779	- Air intake grille
(f) Cooling mode air flow. The heating air flow is 20 m³/h higher for "102" size and 40 m³/h higher for all the other sizes.	- UVC air sterilisation device
	- Casing for built-in version - LIFE Slim Box
	- Casing cover panel with frame and front panel grid

